

Product Catalog

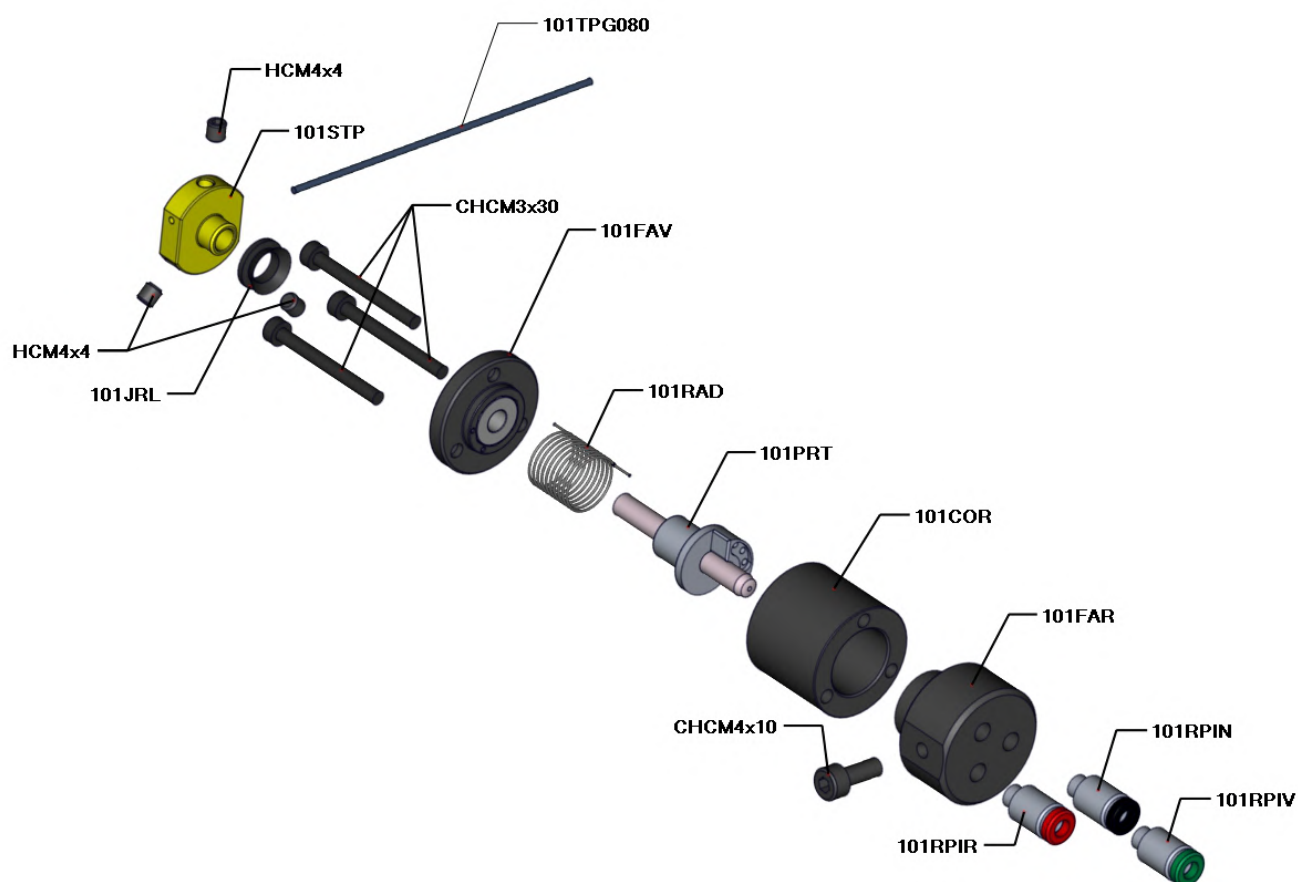
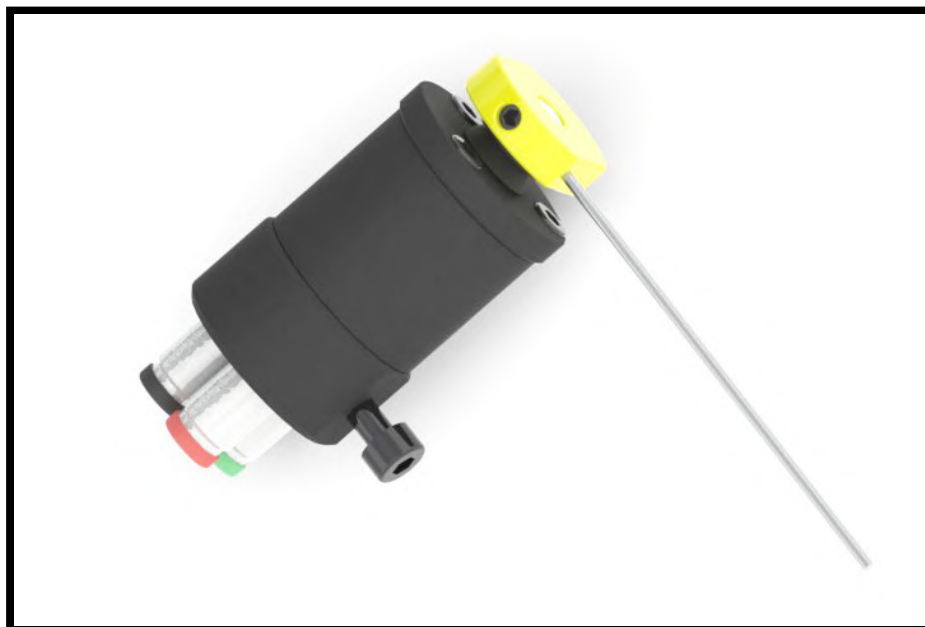


SUMMARY

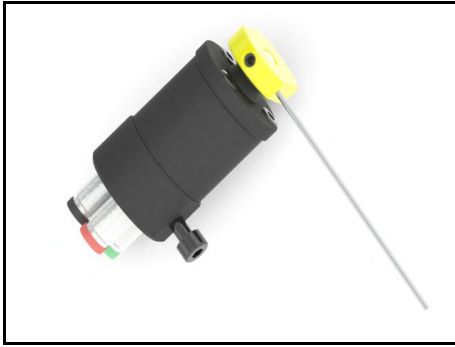
	Pages
<u>BROKEN TOOL DETECTOR</u>	
<u>Broken tool detector Type 101</u>	2
<u>Broken tool detector Type 110</u>	6
<u>Broken tool detector Type 202</u>	10
<u>Broken tool detector Type 404</u>	14
<u>Accessories for broken tool detector</u>	17
 <u>LENGTH GAUGE</u>	
<u>Length gauge HQD / HQDD / HQDDM / HQDDS</u>	23
<u>Length gauge VDD / VDDC12</u>	28
<u>Length gauge LODA / LOOB</u>	32
<u>Length gauge ROD / ROOM / ROOP</u>	37
 <u>DIAMETER GAUGE</u>	
<u>Diameter gauge FDDS/FDD/FDDL</u>	41
 <u>GAUGE IN COMPLET KIT</u>	47
<u>TOUCHSCREEN AND ELECTRONIC CONDITIONER</u>	58
<u>ATTACHMENT ELEMENTS FOR GAUGES</u>	62
<u>ACCESSORIES FOR GAUGES</u>	65
 <u>INDEX : RESEARCH BY PRODUCT REFERENCE</u>	71

Broken tool detector

Type 101



Broken Tool Detector Type 101



Reference **101**

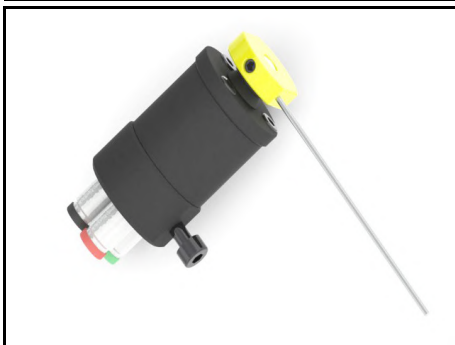
Designation **Broken tool Detector type 101 - COUNTER CLOCKWISE - COMPLETE KIT**

Application 101 only

Sale unit : x1

Description : *Complete kit including:*

- 1 Detector - type 101 (Counter Clockwise)
- 1 smooth fixing rod 0102TFL + 1 milled fixing rod 101TFF + 1 screw tightening yoke 0102NSEV
- 1 standard pressure switch (activation from 1 bar) 0102PST
- 1 spring for reversing rotation direction
- 1 additional needle



Reference **D101**

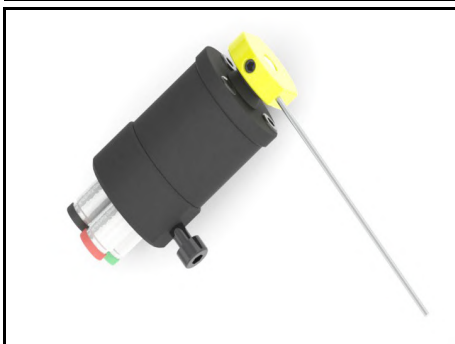
Designation **Broken tool detector type D101 - CLOCKWISE - COMPLETE KIT**

Application 101 only

Sale unit : x1

Description : *Complete kit including:*

- 1 detector D101 (clockwise)
- 1 smooth fixing rod 0102TFL + 1 milled fixing rod 101TFF + 1 tightening yoke 0102NSEV
- 1 standard pressure switch 0102PST (activation from 1 bar)
- 1 right return spring (for reversing rotation direction)
- 1 additional needle



Reference **101NU**

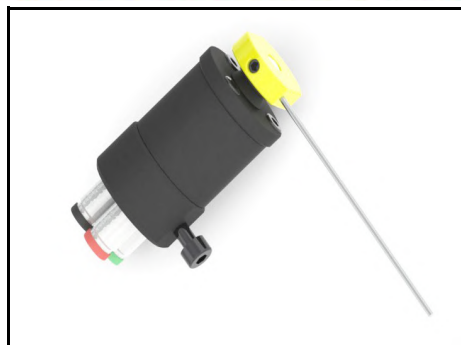
Designation **Broken tool detector type 101 - COUNTER CLOCKWISE - ALONE**

Application 101 only

Sale unit : x1

Description : *Kit including:*

- 1 detector - type 101 (Counter Clockwise)



Reference **D101NU**

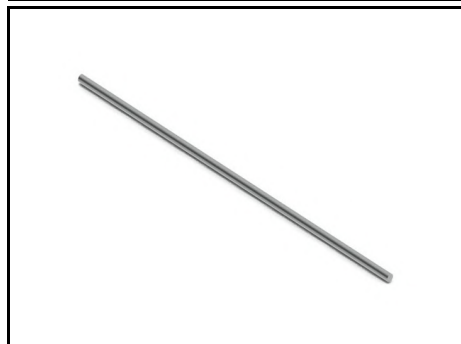
Designation **Broken tool detector type D101 /
CLOCKWISE - ALONE**

Application 101 only

Sale unit : x1

Description : *Kit including:*

-1 detector - type D101 (clockwise)



Reference **101TPG**

Designation **Needle**

Application 101 only

Sale unit : x10

Description : *101TPG080X10 : Pack of 10 needles - 80mm length*

101TPG120X10 : Pack of 10 needles - 120mm length

101TPG170X10 : Pack of 10 needles - 170mm length

101TPG200X10 : Pack of 10 needles - 200mm length



Reference **101TPGCHD**

Designation **Hard chromium plated needle**

Application 101 only

Sale unit : x10

Description : *101TPG080CHDX10 : Pack of 10 needles - 80mm length*

101TPG120CHDX10 : Pack of 10 needles - 120mm length

101TPG170CHDX10 : Pack of 10 needles - 170mm length

101TPG200CHDX10 : Pack of 10 needles - 200mm length



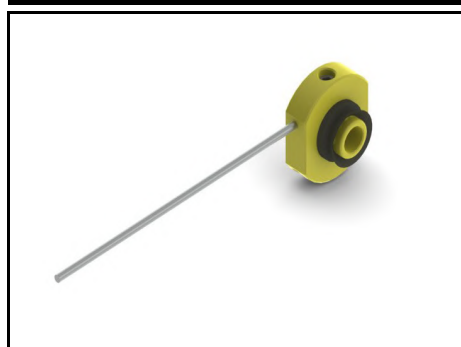
Reference **101TFF**

Designation **Milled fixing rod**

Application 101 only

Sale unit : x1

Description : *165mm length.*



Reference **101STPX1**

Designation **Needle support + seal 101JRL + screw + needle**

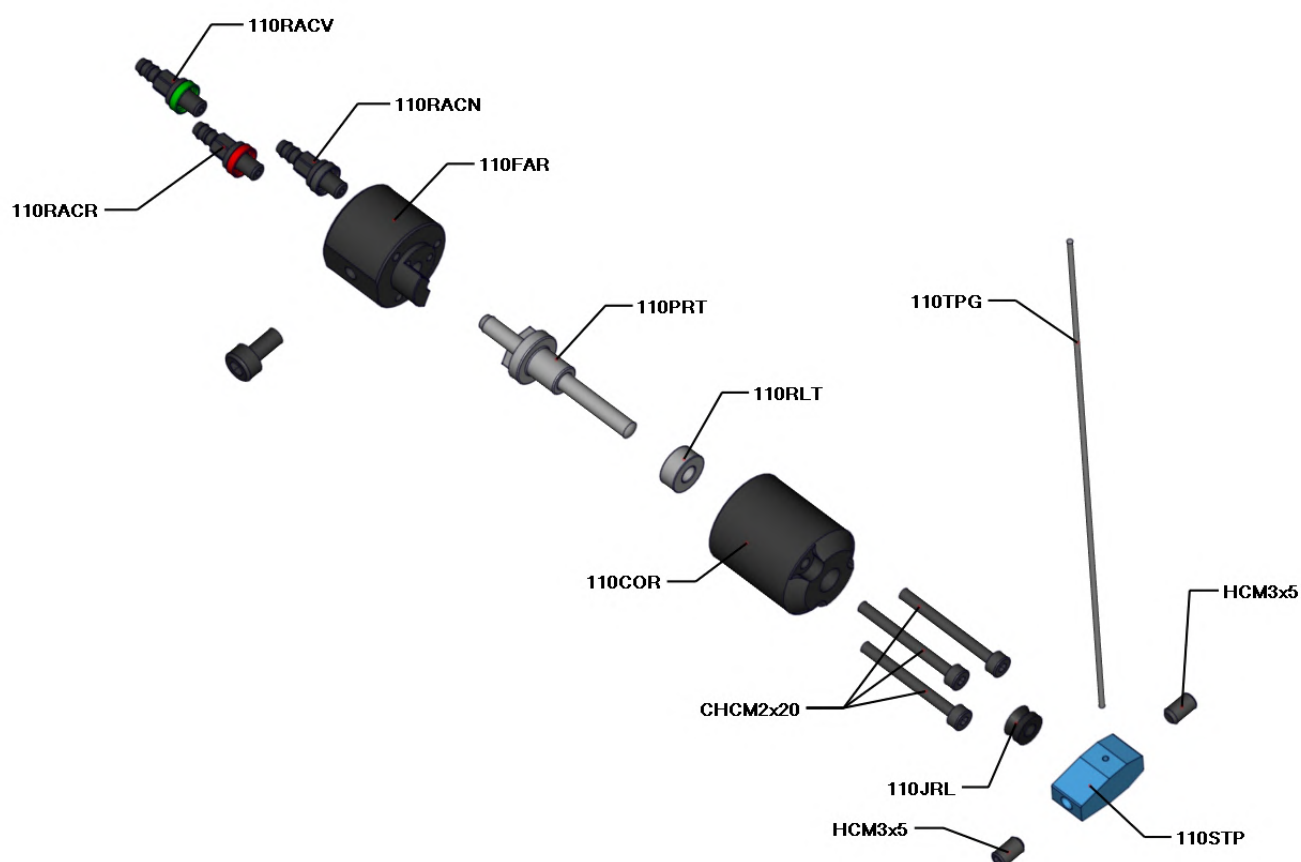
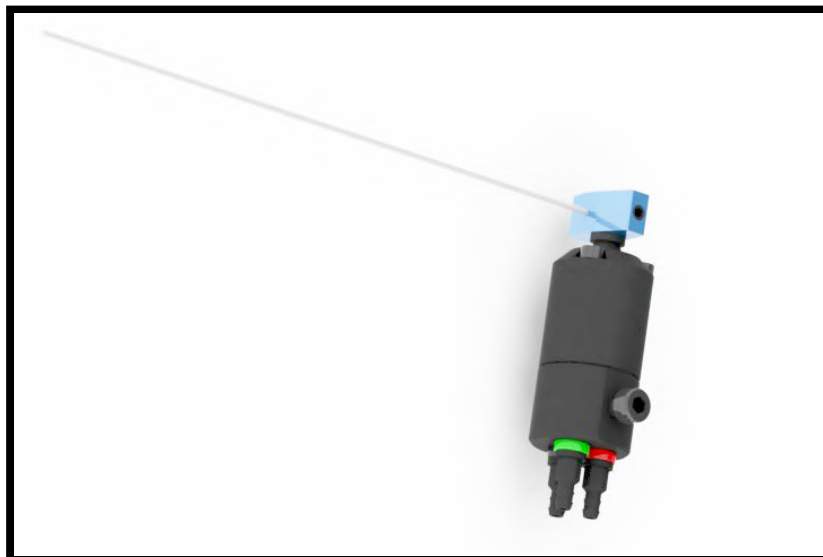
Application 101 only

Sale unit : x1

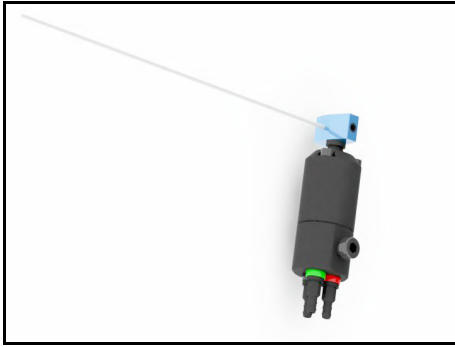
Description :

Broken tool detector

Type 110



Broken tool detector Type 110



Reference **110**

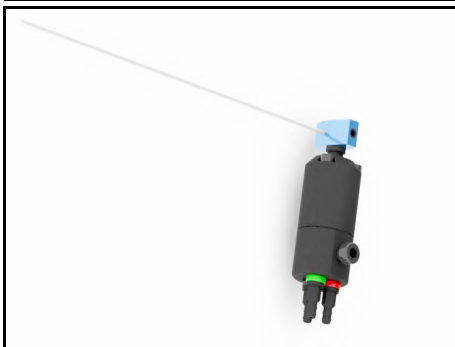
Designation **Broken tool detector type 110 - COUNTER CLOCKWISE - COMPLETE KIT**

Application 110 only

Sale unit : x1

Description : *Complete kit including:*

- 1 body - type 110 (Counter Clockwise)
- 1 smooth fixing rod 0102TFL+ 1 milled fixing rod 202TFF+ 1 screw tightening yoke 0102NSEV
- 1 standard pressure switch - activation from 1 bar (0102PST)
- 1 spring for reversing rotation direction
- 1 additional needle



Reference **D110**

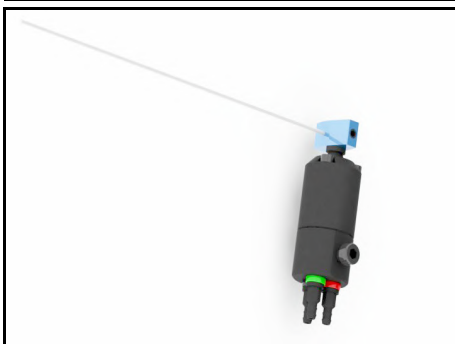
Designation **Broken tool detector type D110 - CLOCKWISE - COMPLETE KIT**

Application 110 only

Sale unit : x1

Description : *Complete kit including:*

- 1 detector D110 (clockwise)
- 1 smooth fixing rod 0102TFL + 1 milled fixing rod 202TFF + 1 tightening yoke 0102NSEV
- 1 standard pressure switch 0102PST (activation from 1 bar)
- 1 right return spring (for reversing rotation direction)
- 1 additional needle



Reference **110NU**

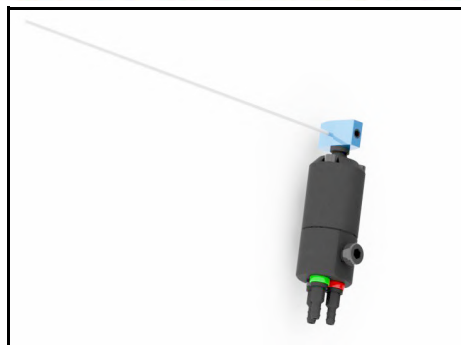
Designation **Broken tool detector type 110 - COUNTER CLOCKWISE - ALONE**

Application 110 only

Sale unit : x1

Description : *Kit including:*

- 1 body only - type 110 (Counter Clockwise)



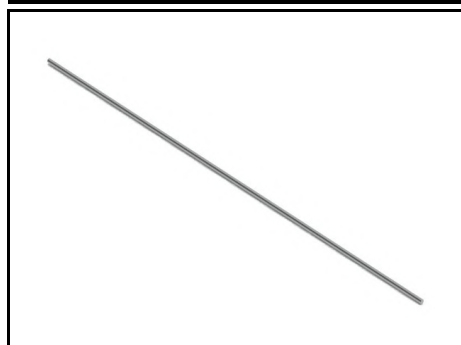
Reference **D110NU**

Designation **Broken tool detector type D110 -
CLOCKWISE - ALONE**

Application 110 only

Sale unit : x1

Description : *Kit including:
-1 detector - type D110 (clockwise)*



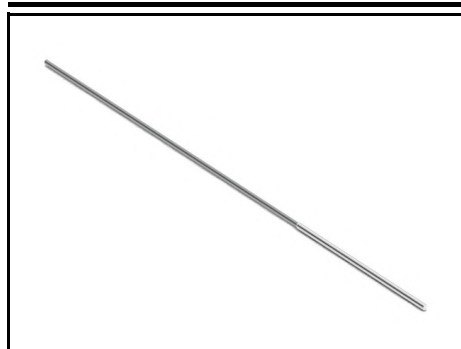
Reference **110TPG120X10**

Designation **Needle**

Application 110 only

Sale unit : x10

Description : *Pack of 10 needles - 120mm length*



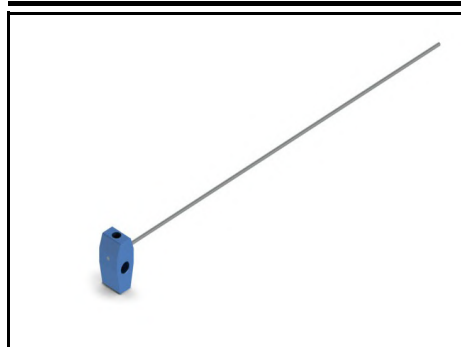
Reference **110TPG120CHDX10**

Designation **Hard chromium plated needle**

Application 110 only

Sale unit : x10

Description : *Pack of 10 hard chromium plated needles - 120mm length*



Reference **110STPX1**

Designation **Needle support + screw + needle**

Application 110 only

Sale unit : x1

Description : *Delivered with 2 screws HC M3*



Reference **110JRL**

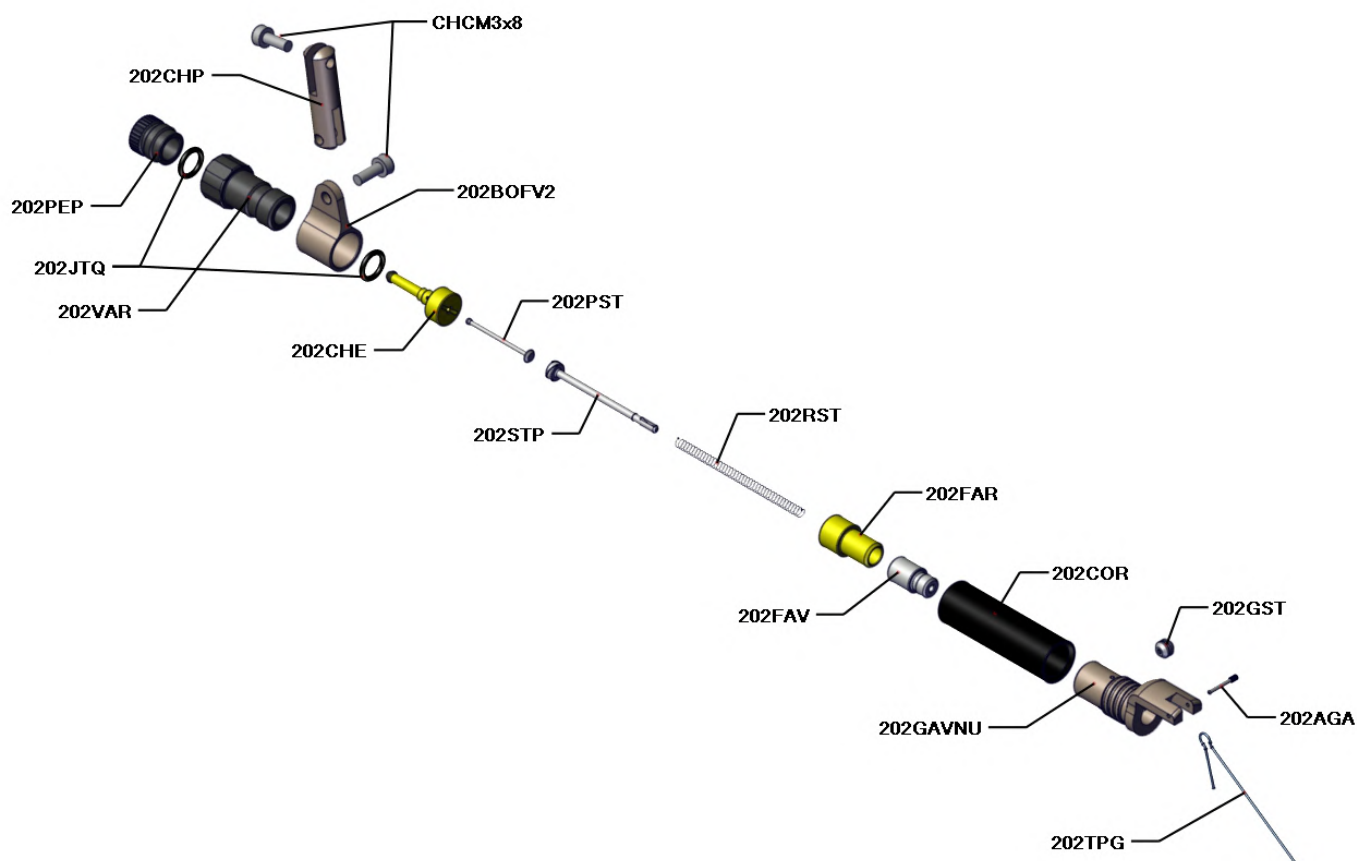
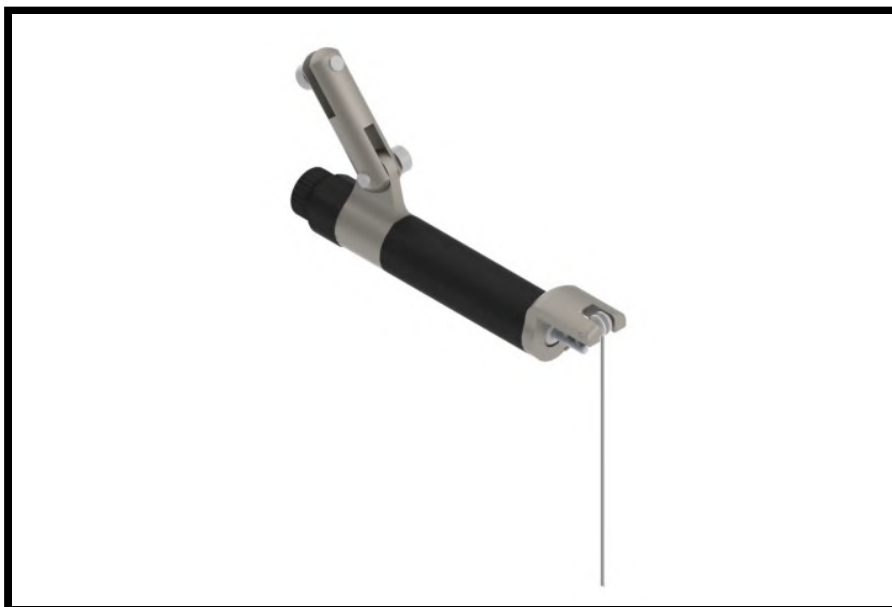
Designation **Seal**

Application 110 only

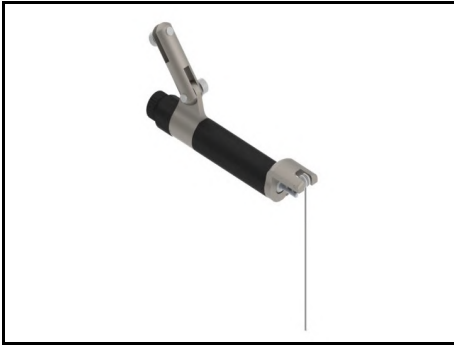
Sale unit : x1

Description :

Broken tool detector Type 202



Broken Tool Detector Type 202



Reference **202**

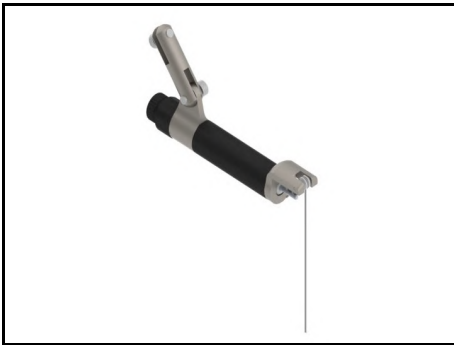
Designation **Broken tool detector type 202**

Application 202 only

Sale unit : x1

Description : *Complete kit with:*

- 1 body - type 202
- 1 smooth fixing rod 0102TFL+ 1 milled fixing rod 0102TFF+ 1 nut 0102NSEV
- 1,25 meters of coaxial tube 202TCX0125 + 1 Y shaped shunt 202YDD
- 1 pressure switch (activation 1 bar) 0102PST
- 6 additional needles



Reference **202NU**

Designation **Broken tool detector type 202**

Application 202 only

Sale unit : x1

Description : *Kit including:*

- 1 body only - type 202



Reference **202TCX**

Designation **Coaxial tube**

Application 202 only

Sale unit : x mètre

Description :



Reference **202YDD**

Designation **Y-shaped shunt for coaxial tube**

Application 202 only

Sale unit : x1

Description :



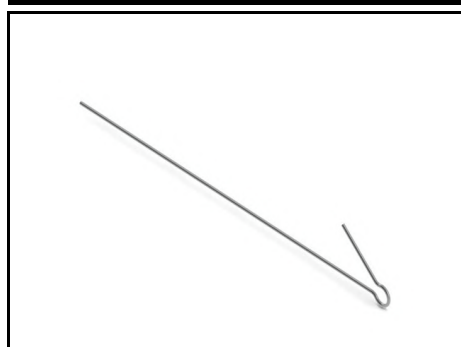
Reference **202UTC**

Designation **Union for coaxial tube**

Application 202 only

Sale unit : x1

Description :



Reference **202TPG**

Designation **Needle**

Application 202 only

Sale unit : x100

Description : *202TPG040X100 : Pack of 100 needles - 40mm length*

202TPG060X100 : Pack of 100 needles - 60mm length

202TPG080X100 : Pack of 100 needles - 80mm length



Reference **202TPGCHD**

Designation **Hard chromium plated needle**

Application 202 only

Sale unit : x100

Description : *202TPGCHD040X100 : Pack of 100 hard chromium plated needles - 40mm length*

202TPGCHD060X100 : Pack of 100 hard chromium plated needles - 60mm length

202TPGCHD080X100 : Pack of 100 hard chromium plated needles - 80mm length



Reference **202TFF**

Designation **Milled fixing rod**

Application 202 and 404

Sale unit : x1

Description : *165mm length*



Reference **202JTQ**

Designation **Toric seal**

Application 202 only

Sale unit : x1

Description : *The seal ensures the pneumatic sealing of the unit. Change it regularly.*



Reference **202PEP**

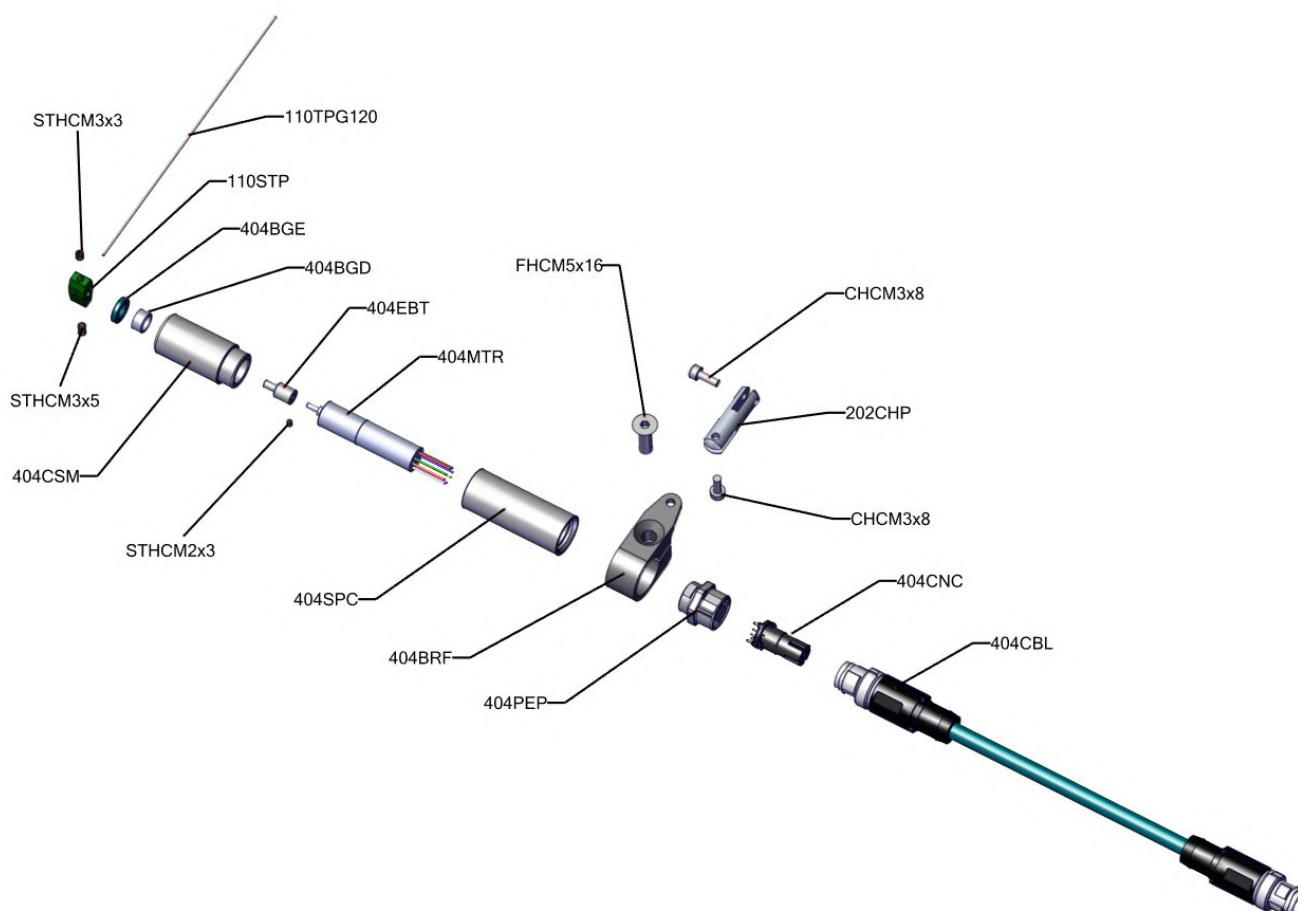
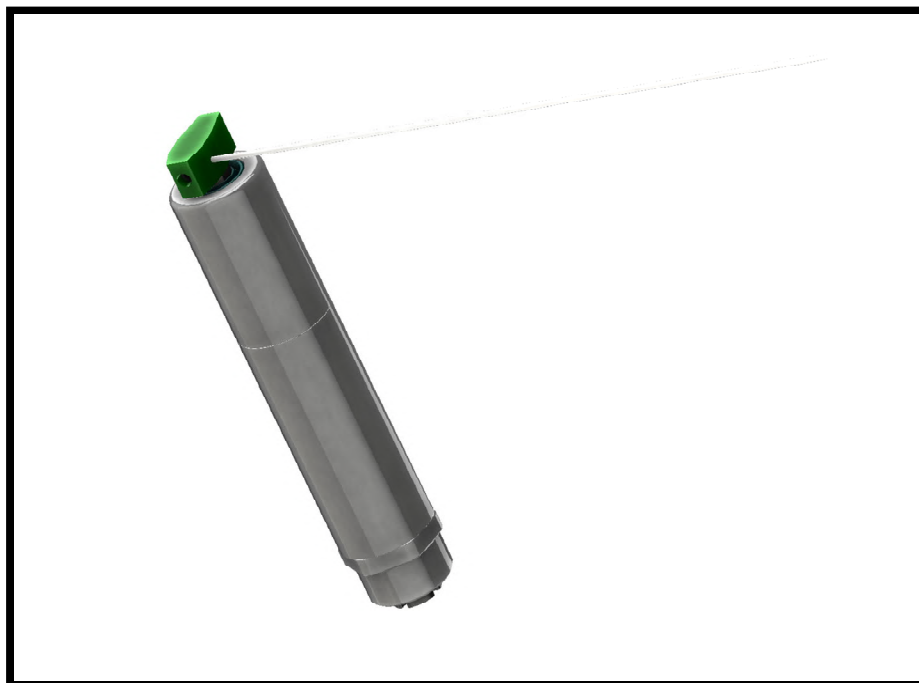
Designation **Tightening screw**

Application 202 only

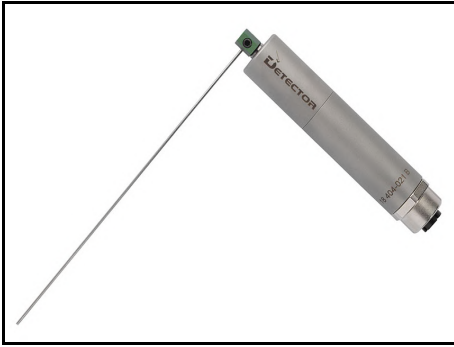
Sale unit : x1

Description :

Broken tool detector Type 404



Broken Tool Detector Type 404



Reference **404**

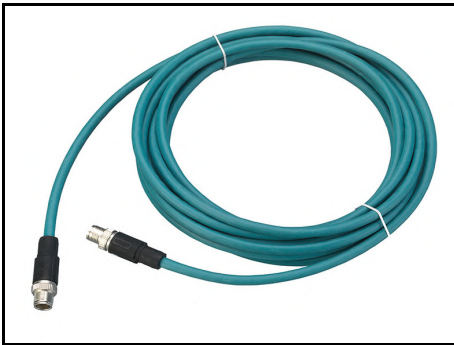
Designation **Broken tool detector type 202**

Application 404 only

Sale unit : x1

Description : *Complete kit including:*

- 1 body - type 404
- 1 smooth fixing rod 0102TFL+ 1 milled fixing rod 202TFF+ 1 screw tightening yoke 0102NSEV
- 1 Fork + 2 screws
- 1 Shielded cable



Reference **404CBL**

Designation **Detector shielded cable**

Application 404 only

Sale unit : x1

Description : *Shielded cable for detector 404 / Cable length : 4 meters*



Reference **404CBL90**

Designation **Detector shielded cable 90°**

Application 404 only

Sale unit : x1

Description : *Shielded cable 90° for detector 404 / Cable length : 5 meters*



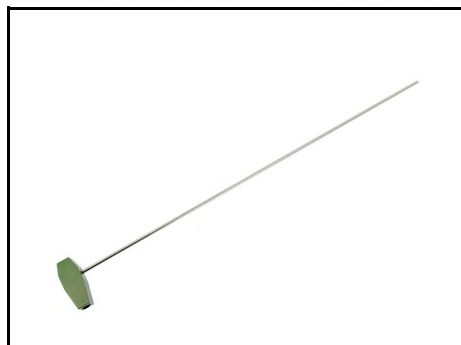
Reference **404RLG05**

Designation **Detector shielded extension cable**

Application 404 only

Sale unit : x1

Description : *Shielded extension cable for detector 404 / Cable length : 5 meters*



Reference **404STPX1**

Designation **Needle support + screw + needle**

Application 404 only

Sale unit : x1

Description : *Delivered with 2 screws HC M3*



Reference **404BRFX1**

Designation **Fixing clamp**

Application 404 only

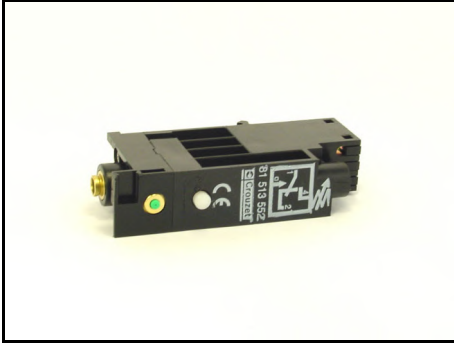
Sale unit : x1

Description : *Complete fixing clamp + screw FHCM5x20*

Accessories for broken tool detectors



Accessories for broken tool detectors



Reference **0102PST**

Designation **Standard pressure switch**

Application 101, 110 and 202

Sale unit : x1

Description : *The standard pressure switch converts the pneumatic signal coming from the detector unit to an electrical signal. (Activation from 1 bar)*



Reference **0102TFL**

Designation **Smooth fixing rod**

Application 101, 110, 202 and 404

Sale unit : x1

Description : *This smooth fixing rod is used with a tightening yoke 0102NSEV or 0102NSEM and with a milled fixing rod 101TFF or 202TFF to mount the broken tool detectors 101, 110 and 202.
165mm length*



Reference **0102VFTCX1**

Designation **Short fixing screw**

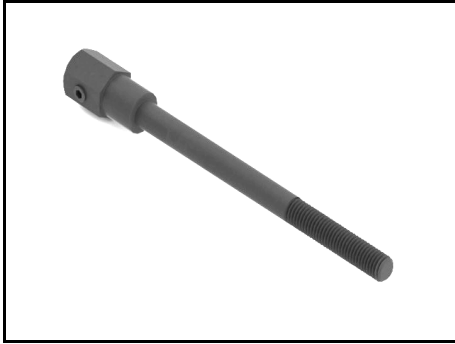
Application 101, 110 and 202

Sale unit : x1

Description : *This fixing screw is used only for the Tornos machines type AS14 - SAS16 - SAS16DC - SAS16,6.*

It replaces the fixing screw of the slide 2 or 3 and allows the mounting of the smooth fixing rod 0102TFL to install the broken tool detectors 101, 110 and 202 without drilling the frame of the machine.

See the technical manual for the installation.



Reference **0102VFTLX1**

Designation **Long fixing screw**

Application 101, 110 and 202

Sale unit : x1

Description : *This fixing screw is used only for the Tornos machines type AS14 - SAS16 - SAS16DC - SAS16,6.
It replaces the fixing screw of the slide 1 or 4 and allows the mounting of the smooth fixing rod 0102TFL to install the broken tool detectors 101, 110 and 202 without drilling the frame of the machine.
See the technical manual for the installation.*



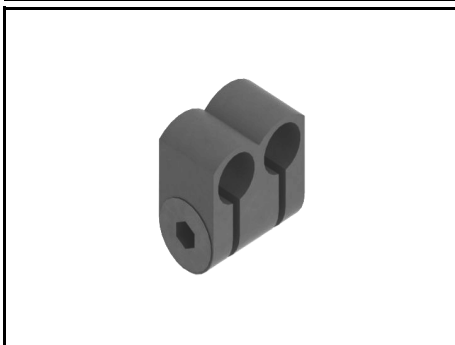
Reference **0102NSEMV2**

Designation **Tightening yoke with a knurled wheel**

Application 101, 110, 202 and 404

Sale unit : x1

Description : *This tightening yoke with a knurled wheel attaches a smooth fixing rod 0102TFL with a milled fixing rod 101TFF or 202TFF and is used to mount the broken tool detectors 101, 110 and 202.*



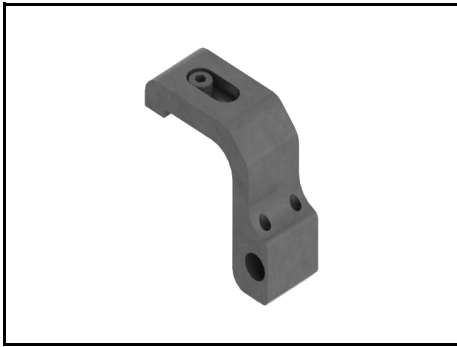
Reference **0102NSEVV2**

Designation **Screwed tightening yoke**

Application 101, 110, 202 and 404

Sale unit : x1

Description : *This tightening yoke with a screw attaches a smooth fixing rod 0102TFL with a milled fixing rod 101TFF or 202TFF and is used to mount the broken tool detectors 101, 110 and 202.*



Reference **0102EFXGM16X1**

Designation **Fixing square GM16**

Application 101, 110, 202 and 404

Sale unit : x1

Description : *This fixing square is used with a smooth fixing rod to install a broken tool detector on the drill holder of a Gildemeister GM16 machine.*



Reference **0102SAI**

Designation **Magnetic support**

Application 101, 110, 202 and 404

Sale unit : x1

Description : *This support is fixed on the frame of the machine to install a broken tool detector without drilling in the frame.*



Reference **0102EEV110**

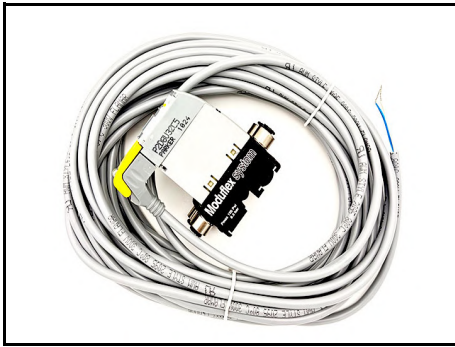
Designation **Solenoid valve 110 Volts**

Application 101, 110 and 202

Sale unit : x1

Description : *This solenoid valve converts the electrical signal into a pneumatic signal to control a broken tool detector. The voltage is 110 volts AC. It is made up of a coil, a pneumatic collar, two plug connections 4x1/8, a solenoid valve and a cable.*

Also available in 24 volts (Ref.:0102EEV24)



Reference **0102EEV24PKS**

Designation **Solenoid valve 24 Volts**

Application 101, 110 and 202

Sale unit : x1

Description : *This solenoid valve converts the electrical signal into a pneumatic signal to control a pneumatic broken tool detector. The voltage is 24 volts DC. It is made up of a coil solenoid valve, a pneumatic collar, four plugs connections Ø4, and a cable.*

Also available in double ways.



Reference **0102KPC**

Designation **Pressure complete kit**

Application 101, 110 and 202

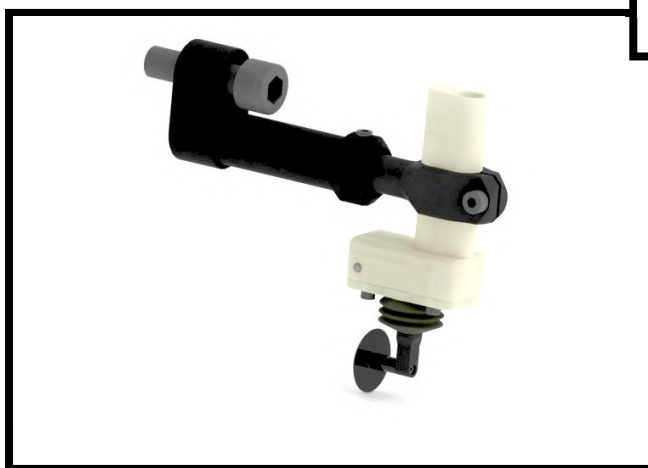
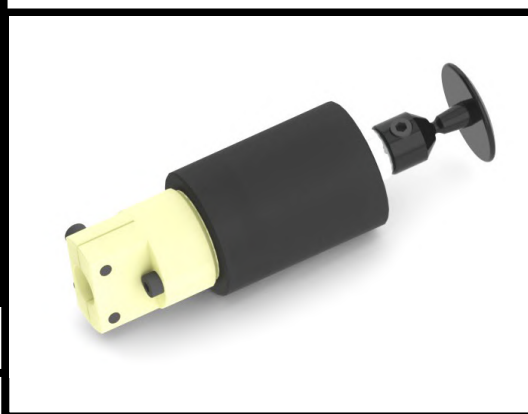
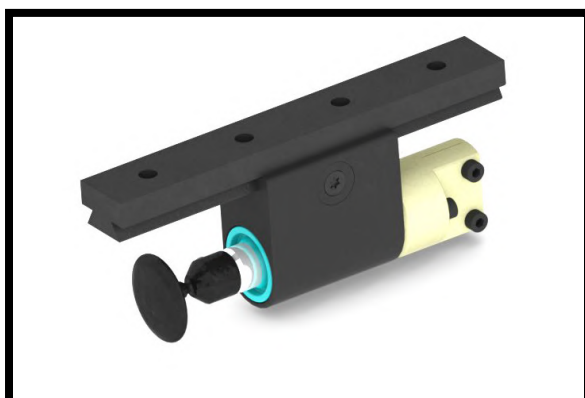
Sale unit : x1

Description : *This pressure kit regulates the necessary pressure for the functioning of the broken tool detector (between 4 and 6 bars). It is made up of a regulator valve, a pressure gauge, two plug connections 6x1/8 and a mounting bracket.*

Length gauge

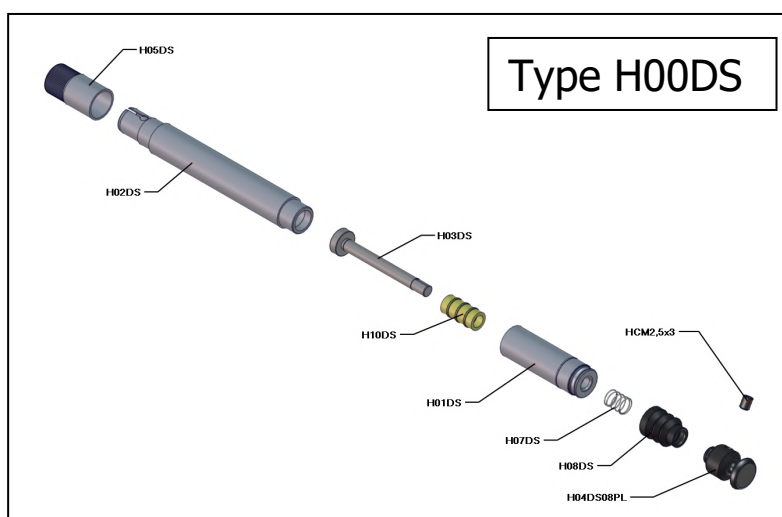
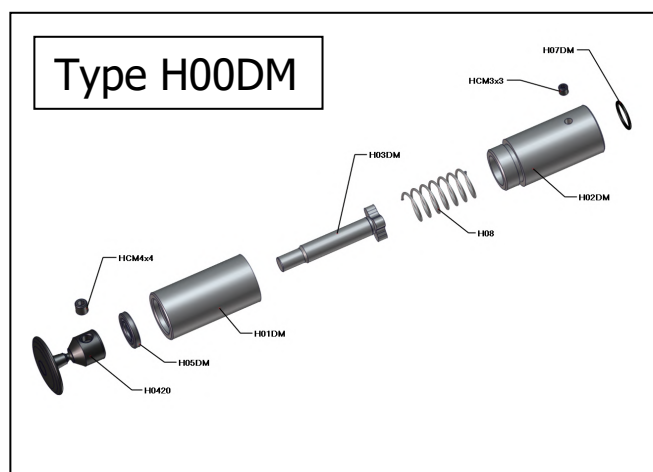
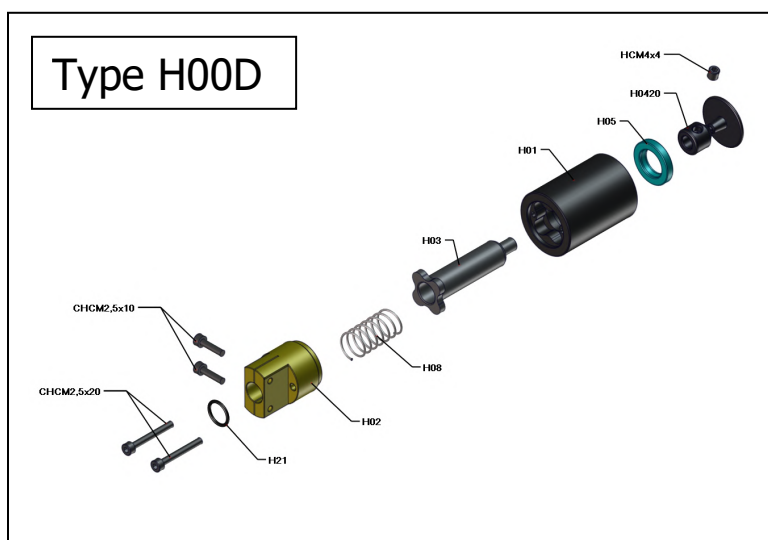
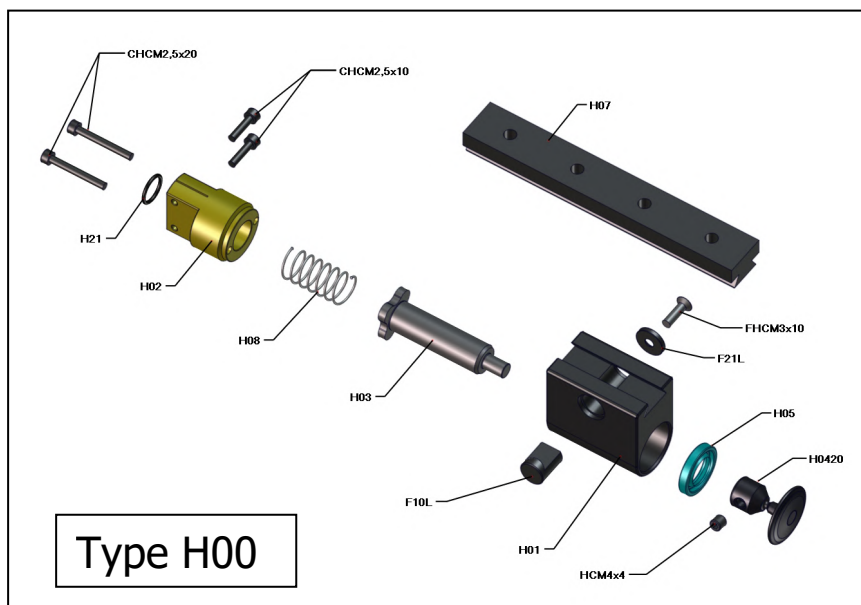
Type H00 / H00D / H00DM / H00DS

V00 / V00C12

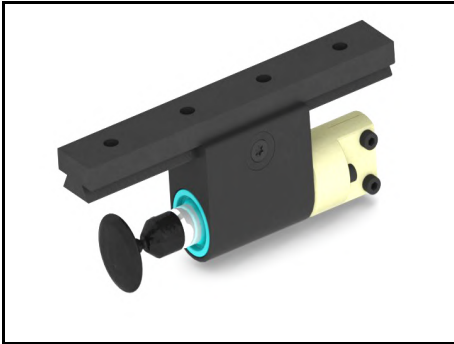


Length gauge

Type H00 / H00D / H00DM / H00DS



Length Gauge



Reference **H00**

Designation **Probe H00**

Application Length measurement on the fly

Sale unit : x1

Description : *This probe H00 is used to measure part length. It mounts horizontally between 2 stations for measurement on the fly. It is used with the internal sensor and amplifier.*



Reference **H00D**

Designation **Probe H00D**

Application Length measurement at station

Sale unit : x1

Description : *This Probe H00D is used to measure part length. It mounts horizontally between 2 stations for measurement on the fly. It is used with the internal sensor and amplifier.*



Reference **H00DM**

Designation **Probe H00DM**

Application Length measurement at station

Sale unit : x1

Description : *This probe H00DM is used to measure part length. It mounts horizontally like a drilling tool (Ø16) for measurement at the station. It is used with the internal sensor and amplifier.*



Reference **H00DS**

Designation **Probe H00DS**

Application Length measurement at station

Sale unit : x1

Description : *This probe is used to measure part length. It mounts horizontally like a drilling tool (Ø8) for measurement at the station. It is used with the internal sensor and amplifier.*



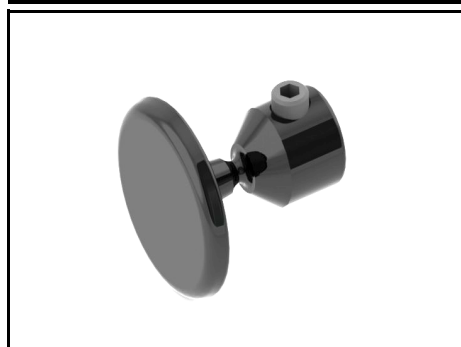
Reference **H0420X1**

Designation **Probe tip Ø20 (standard)**

Application H00 / H00D / H00DM

Sale unit : x1

Description : *This tip is used for measurement in process or at station.*



Reference **H0420PLX1**

Designation **Dish probe tip Ø20**

Application H00D and H00DM

Sale unit : x1

Description : *This tip is used only for measurement at station.*



Reference **H0410X1**

Designation **Probe tip Ø10mm**

Application H00 / H00D / H00DM

Sale unit : x1

Description : *This tip is used for measurement at station or in process.*



Reference **H0410PLX1**

Designation **Dish probe tip Ø10**

Application H00D and H00DM at station

Sale unit : x1

Description : *This tip is used only for a measurement at station.*



Reference **H04ADAX1**

Designation **Probe tip Adapter + STHC M4x4 Screw**

Application H00 / H00D / H00DM

Sale unit : x1

Description : *This adapter allows you to attach any metrology probe with an M2.5x0.45 thread.*



Reference **H04DS08PLX1**

Designation **Dish probe tip Ø8**

Application H00DS only

Sale unit : x1

Description : *This tip is used only for measurement at station.*



Reference **H04DS08X1**

Designation **Probe tip Ø8**

Application H00DS only

Sale unit : x1

Description : *This tip is used for measurement at station or in process.*



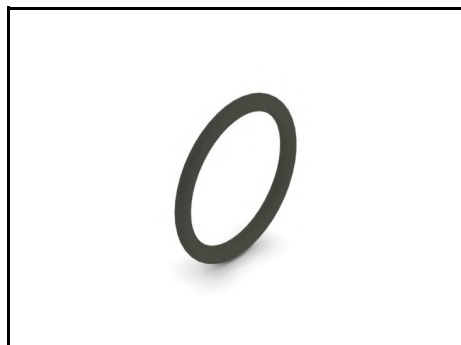
Reference **H07**

Designation **Standard dovetail slide**

Application H00 and F00L

Sale unit : x1

Description : *This slide is fixed on the mounting bracket. It allows the precise movement of the probe during installation and part setup. The position is locked by the tightening of the clamp.*



Reference **H07DM**

Designation **Toric seal**

Application H00DM only

Sale unit : x1

Description : *This seal is situated at the back of the probe H00DM to protect the sensor from contamination.*



Reference **H05DS**

Designation **Tightening nut**

Application H00DS only

Sale unit : x1

Description : *It is used to tighten the sensor to the body of the probe.*



Reference **H07DS**

Designation **Return spring**

Application H00DS only

Sale unit : x1

Description : *This spring returns the piston of the probe to its starting position.*



Reference **H08DS**

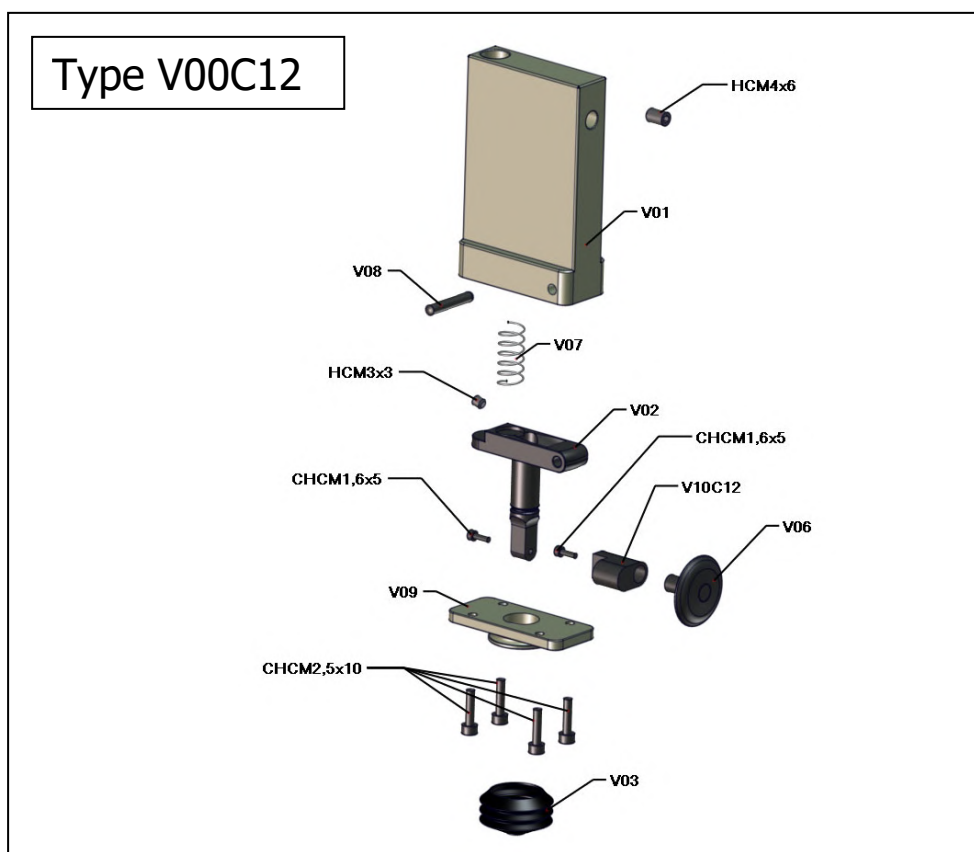
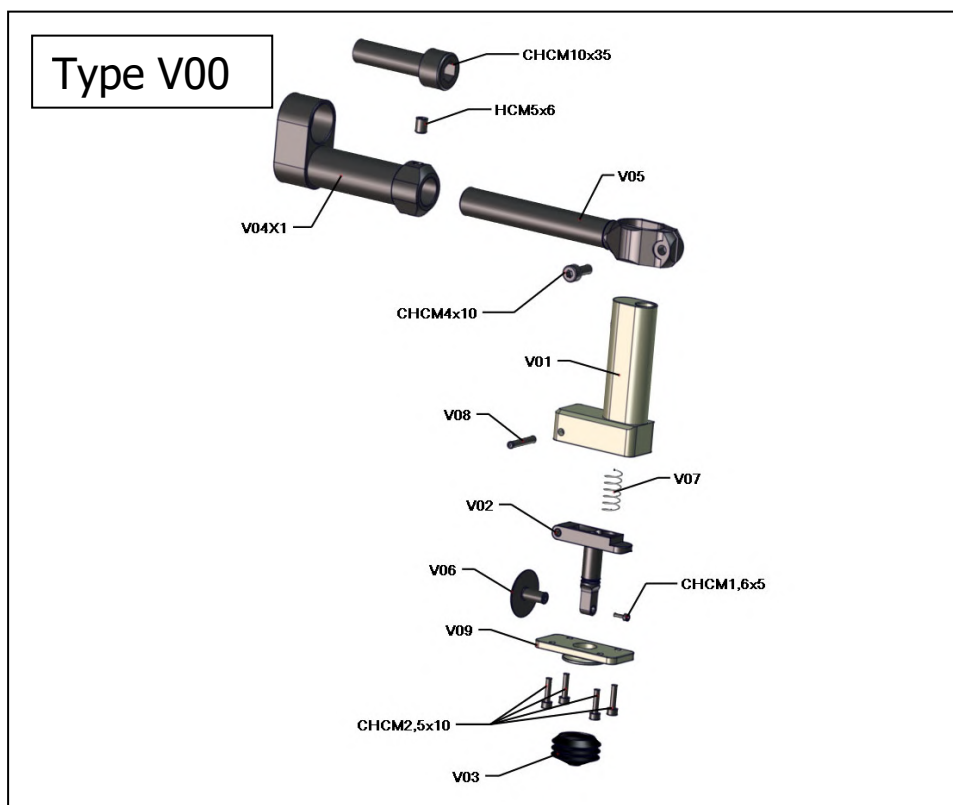
Designation **Protective bellow**

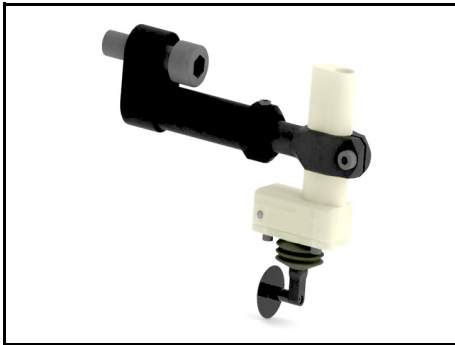
Application H00DS only

Sale unit : x1

Description : *The bellow protects the unit from contamination. A bellow in good condition is necessary to assure proper performance.*

Length gauge Type V00 / Type V00C12





Reference **V00**

Designation **Probe V00**

Application Length measurement in process

Sale unit : x1

Description : *This probe V00 is used to measure part length.
It is installed vertically between 2 stations for measurement in process.
It is used in conjunction with the internal sensor and an amplifier.*



Reference **V00C12**

Designation **Probe V00C12**

Application Length measurement at station

Sale unit : x1

Description : *This probe V00C12 is used to measure part length.
It is installed in a tool holder type 12mm square fixed on a slide like a plunging tool
for length measurement at station.
It is used in conjunction with the internal sensor and an amplifier.*



Reference **V06X1**

Designation **Probe tip - Ø 20**

Application V00 and V00C12

Sale unit : x1

Description : *Supply with 1 screw CHC M1,6x5.*



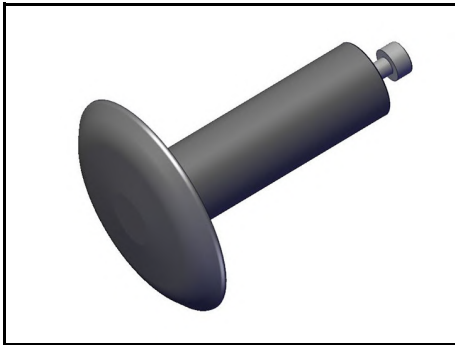
Reference **V06-10X1**

Designation **Probe tip - Ø 10**

Application V00 and V00C12

Sale unit : x1

Description : *Supply with 1 screw CHC M1,6x5 (V11).*



Reference **V06R22X1**

Designation **Probe tip - Ø 20 + extension**

Application V00 and V00C12

Sale unit : x1

Description : *Supply with 1 screw CHC M1,6x5.*



Reference **V11X10**

Designation **Screw CHC M1,6x5**

Application V00 and V00C12

Sale unit : x10

Description : *This screw is used to fix the probe tip V06X1 on the contact holder return arm V02X1.*



Reference **V03**

Designation **Protective bellow**

Application V00 and V00C12

Sale unit : x1

Description : *The bellow protects the unit from contamination.
It is imperative to have a bellow in good condition to assure the good working of the probe.*



Reference **V04X1**

Designation **Mounting body**

Application V00 only

Sale unit : x1

Description : *Delivered with 1 screw CHC M10x35*



Reference **V05X1**

Designation **Mounting post**

Application V00 only

Sale unit : x1

Description :



Reference **V02X1**

Designation **Contact holder return arm**

Application V00 and V00C12

Sale unit : x1

Description : *The contact holder return arm moves during measurement. The probe tip V06X1 is fixed to this holder.*



Reference **V10C12**

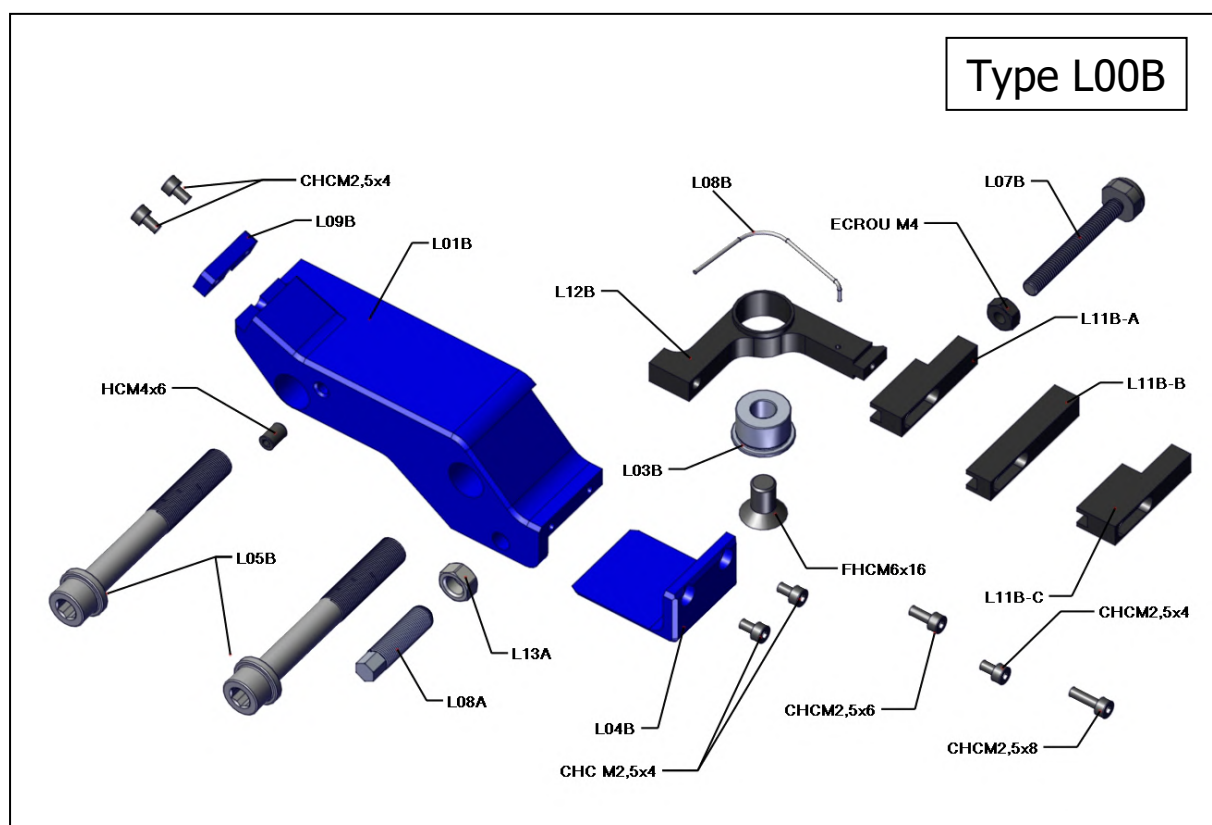
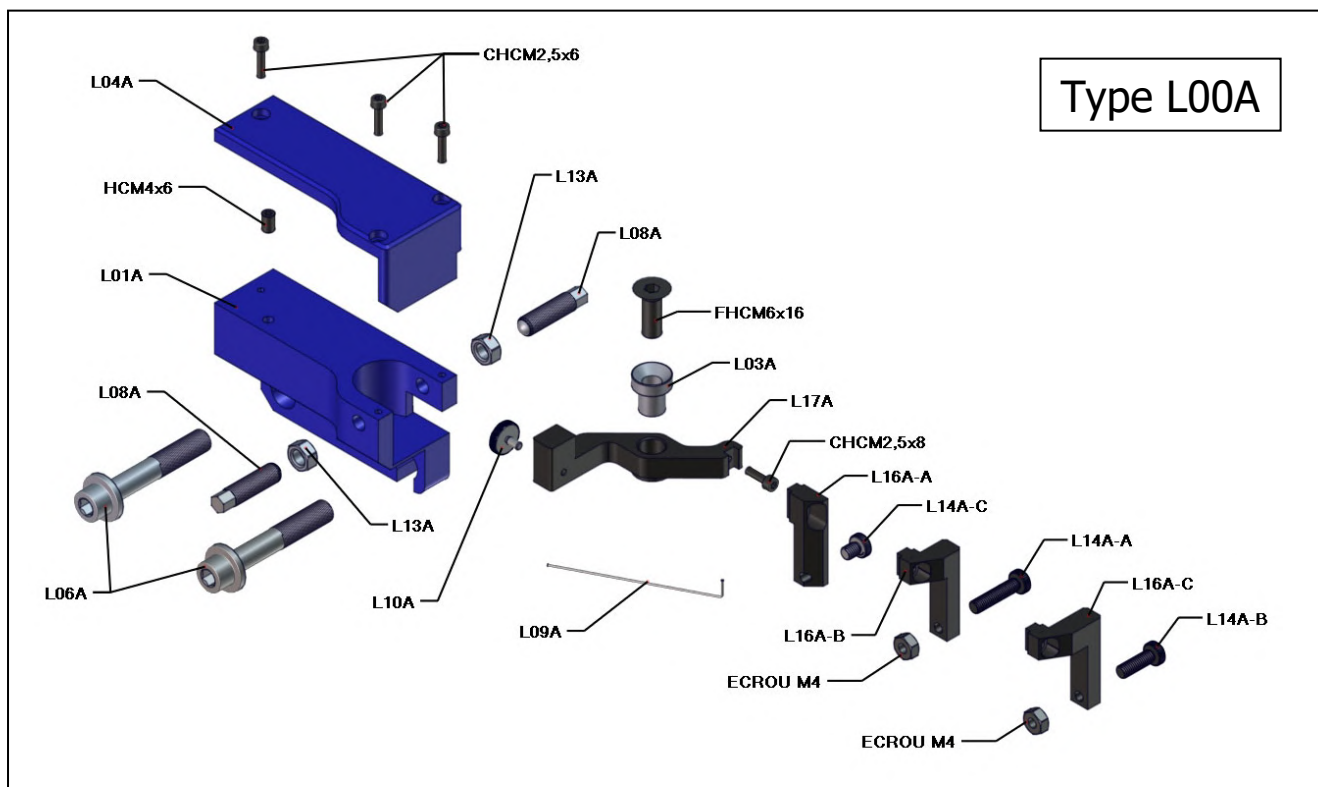
Designation **Adapter of probe tip**

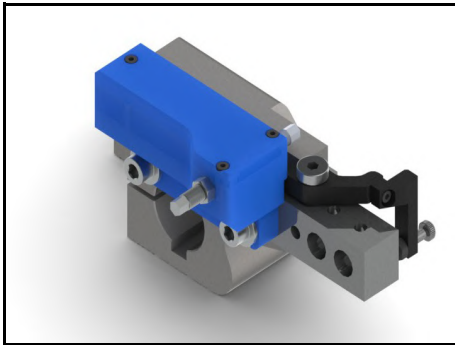
Application V00C12 only

Sale unit : x1

Description : *The adapter is used to align the center of the probe with the one of the piece to be measured.*

Length gauge Type L00A / Type L00B





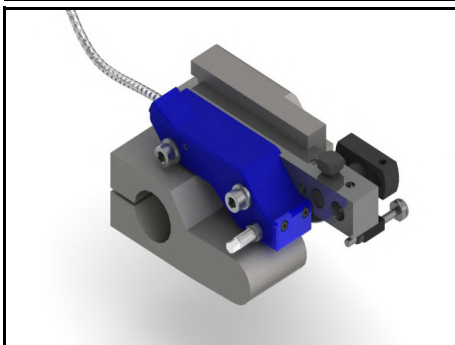
Reference **L00A**

Designation **L00A mechanical probe for the Tornos SAS16.6 counter spindle lever**

Application Length measurement on the fly

Sale unit : x1

Description : *This probe is used to measure part length on the fly on a TORNOS SAS16.6 machine. It is installed on the counter spindle lever. It is used in conjunction with the Detector internal sensor and amplifier.*



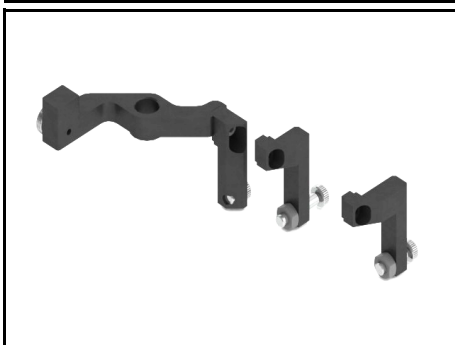
Reference **L00B**

Designation **L00b mechanical probe for the Tornos SAS16.6 counter spindle lever**

Application Length measurement on the fly

Sale unit : x1

Description : *This probe is used to measure part length on the fly on a TORNOS SAS16.6 machine. It is installed on the counter spindle lever. It is used in conjunction with the Detector internal sensor and amplifier.*



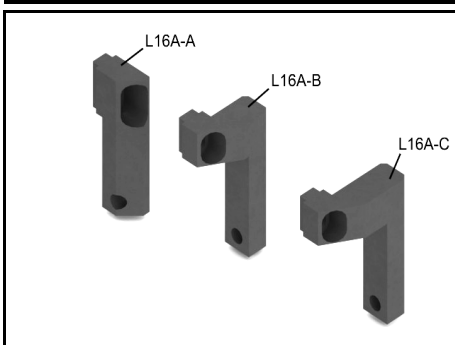
Reference **L17AX1**

Designation **Measuring arm + tip**

Application L00A only

Sale unit : x1

Description : *It displaces the internal sensor tip with the movement of the measuring arm contact.*



Reference **L16A**

Designation **Tip of measure**

Application L00A only

Sale unit : x1

Description : *Interchangeable tip setting in end of measuring arm*



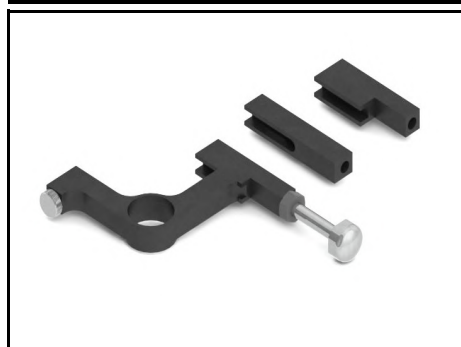
Reference **L14A-A**

Designation **Contact tip**

Application L00A only

Sale unit : x1

Description : *This tip contact*



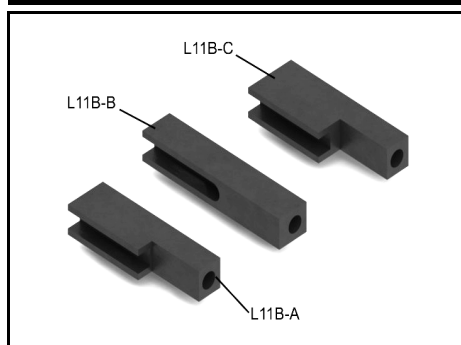
Reference **L12BX1**

Designation **Measuring arm + tip**

Application L00B only

Sale unit : x1

Description : *It displaces the internal sensor tip with the movement of the measuring arm contact.*



Reference **L11B**

Designation **Tip of measure**

Application L00B only

Sale unit : x1

Description : *Interchangeable tip setting in end of measuring arm*



Reference **L07BX1**

Designation **Contact tip + M4 nut**

Application L00B only

Sale unit : x1

Description : *This tip contact the part to be measured.*



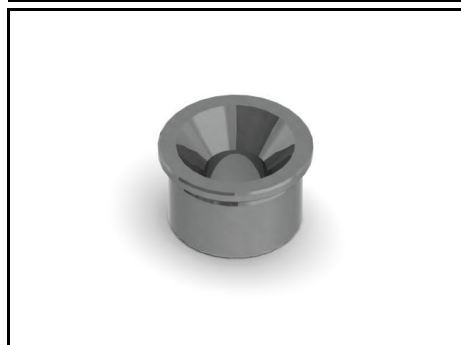
Reference **L03A**

Designation **Guide ring**

Application L00A only

Sale unit : x1

Description : *It guides the measurement arm in its rotation. It is mounted with a screw FHC M6x20 on the drill holder lever of the machine*



Reference **L03B**

Designation **Guide ring**

Application L00B only

Sale unit : x1

Description : *It guides the measurement arm in its rotation. It is mounted with a screw FHC M6x20 on the drill holder lever of the machine*



Reference **L06A**

Designation **Fixing screw M7-0,5x40**

Application L00A only

Sale unit : x1

Description : *It is used to mount the complet unit onto the drill-holder lever.*



Reference **L05B**

Designation **Fixing screw M7x0,5x53**

Application L00B only

Sale unit : x1

Description : *It is used to mount the complet unit onto the drill-holder lever.*



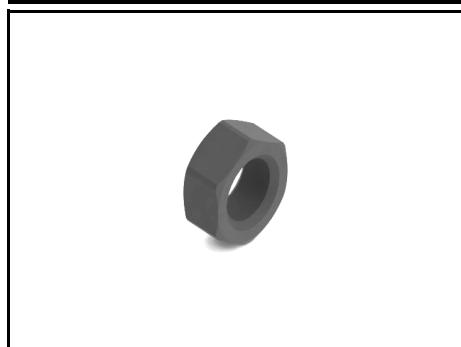
Reference **L08A**

Designation **Screw H M6-0,5x25**

Application L00A and L00B

Sale unit : x1

Description : *It is used to adjust and lock the probe position on the lever.*



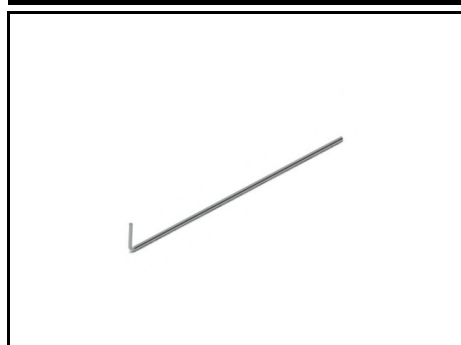
Reference **L13A**

Designation **Nut M6x0,5**

Application L00A and L00B

Sale unit : x1

Description : *It is used to clamp the adjustment screws L08A.*



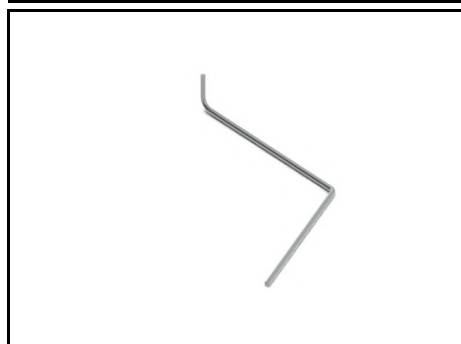
Reference **L09A**

Designation **Return spring**

Application L00A only

Sale unit : x1

Description : *It brings the lever to its return position.*



Reference **L08B**

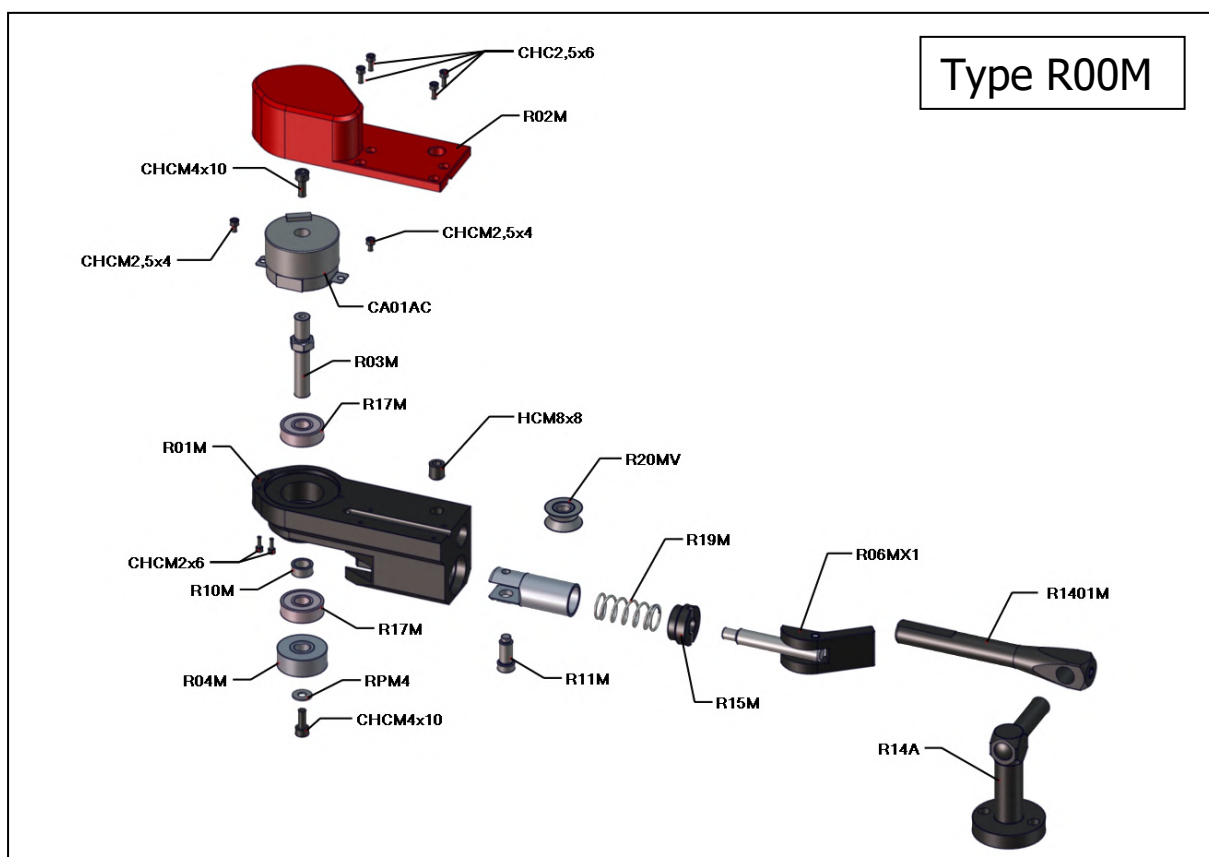
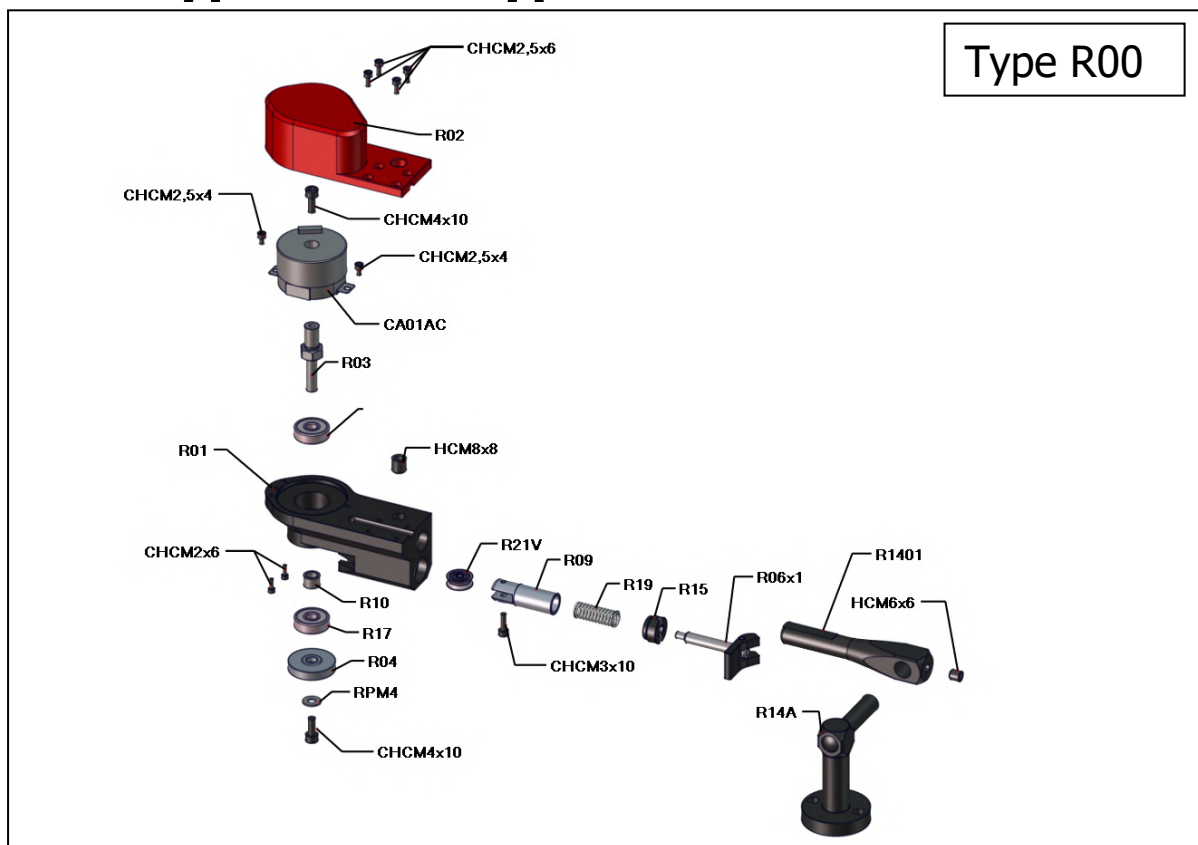
Designation **Return spring**

Application L00B only

Sale unit : x1

Description : *It brings the lever to its return position.*

Length gauge Type R00 / Type ROOM / R00P





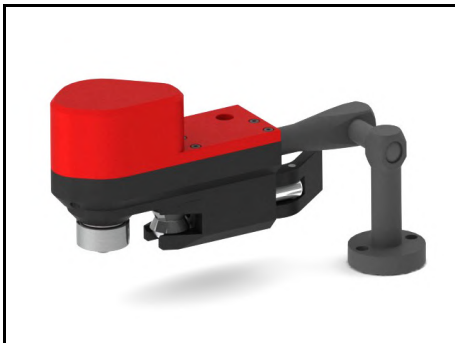
Reference **R00**

Designation **Length gauge**

Application Length gauge for escomatic machines

Sale unit : x1

Description : *It allows to measure one or several lengths (4 maxi.) linked at the wire feedout. It is compatible with the D2, D4 and Newmac Esco machines.*



Reference **R00M**

Designation **Length gauge**

Application Length gauge for escomatic machines

Sale unit : x1

Description : *It allows to measure one or several lengths (4 maxi.) linked at the wire feedout. It is compatible with the Eubama machines.*



Reference **R00P**

Designation **Vertical length gauge**

Application Length gauge for escomatic machines

Sale unit : x1

Description : *It allows to measure one or several lengths (4 maxi.) linked at the wire feedout. It is compatible with the D6 Esco machines.*



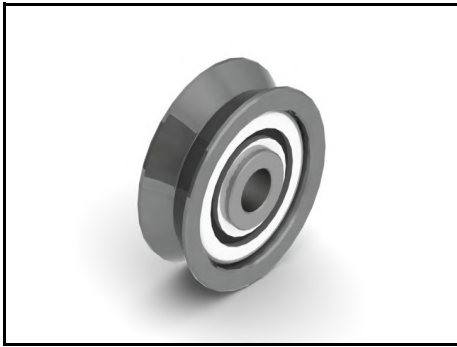
Reference **R24**

Designation **Tightening running wheel Ø0,4 à Ø2**

Application R00 only

Sale unit : x1

Description : *It allows to keep the wire against the measurement running wheel. Its V shape increases the tightening of the bar against the measurement running wheel. It can be used with 0,4mm to 2mm diameter wire.*



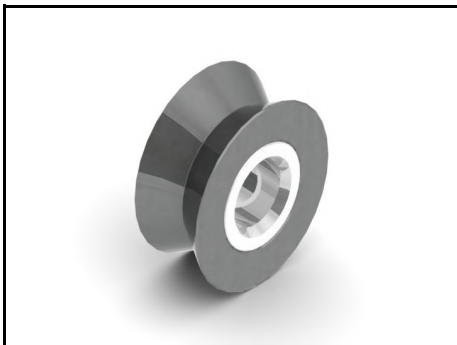
Reference **R25**

Designation **Tightening running wheel V Ø1,2 à Ø7**

Application R00 only

Sale unit : x1

Description : *It allows to keep the wire against the measurement running wheel. Its V shape increases the tightening of the bar against the measurement running wheel. It can be used with 1,2mm to 7mm diameter wire.*



Reference **R20MV**

Designation **Tightening running wheel V Ø2,5 à Ø14**

Application R00M only

Sale unit : x1

Description : *It allows to keep the wire against the measurement running wheel. Its V shape increases the tightening of the bar against the measurement running wheel. It can be used with 2,5mm to 14mm diameter wire.*



Reference **STGGLC01X10**

Designation **Support roller**

Application R00P only

Sale unit : x1

Description : *Support roller to adapt to the Ø of the wire to control*



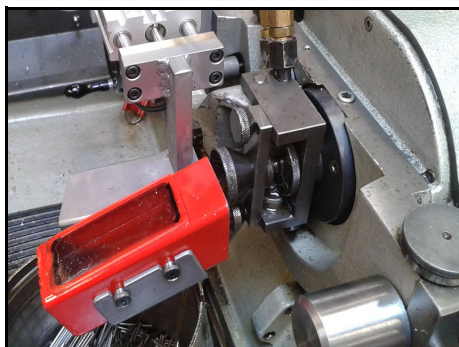
Reference **STGD6**

Designation **Roller stabilizer for ESCO D6**

Application R00P only

Sale unit : x1

Description : *This roller stabilizer is only compatible with ESCO D6. Its purpose is to hold the wire securely during length measurement using the R00P measurer.*



Reference **RCPD2**

Designation **Recovery chute**

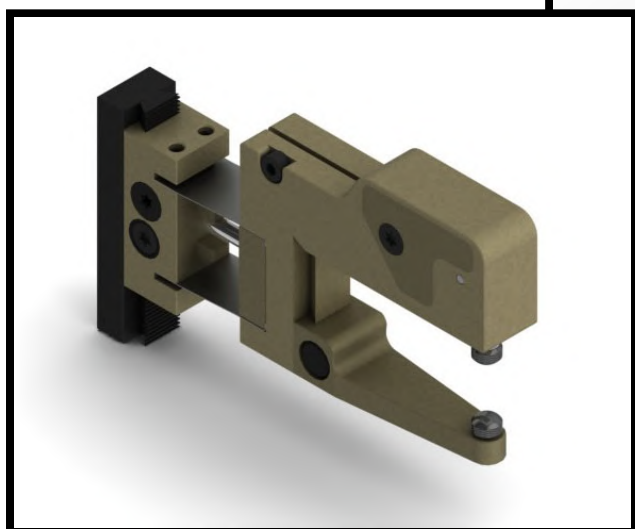
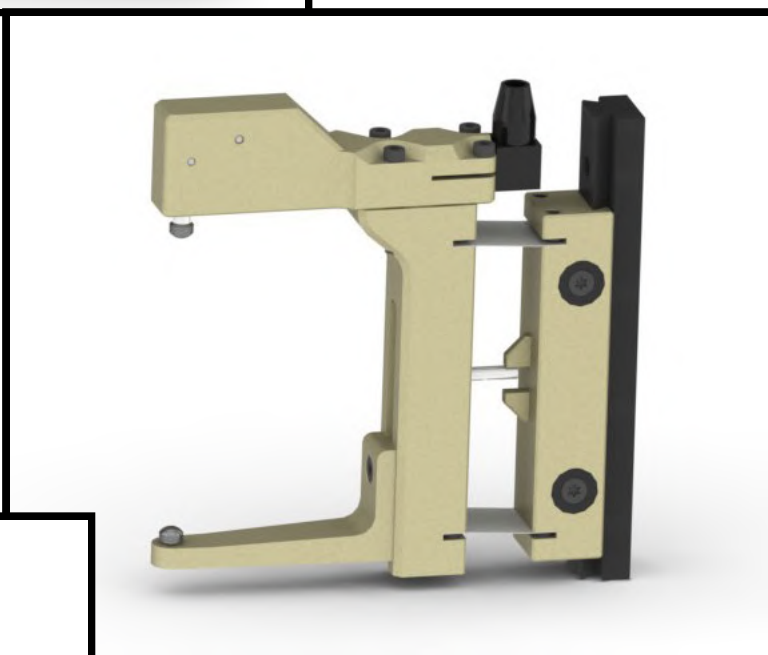
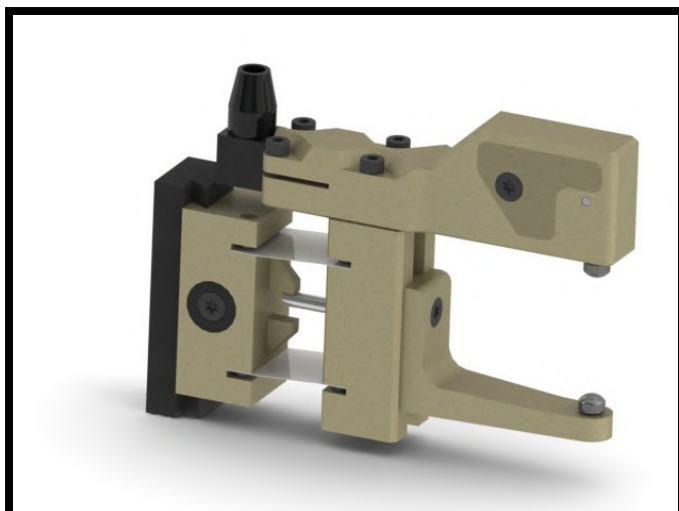
Application For ESCO D2, D5, Ultra

Sale unit : x1

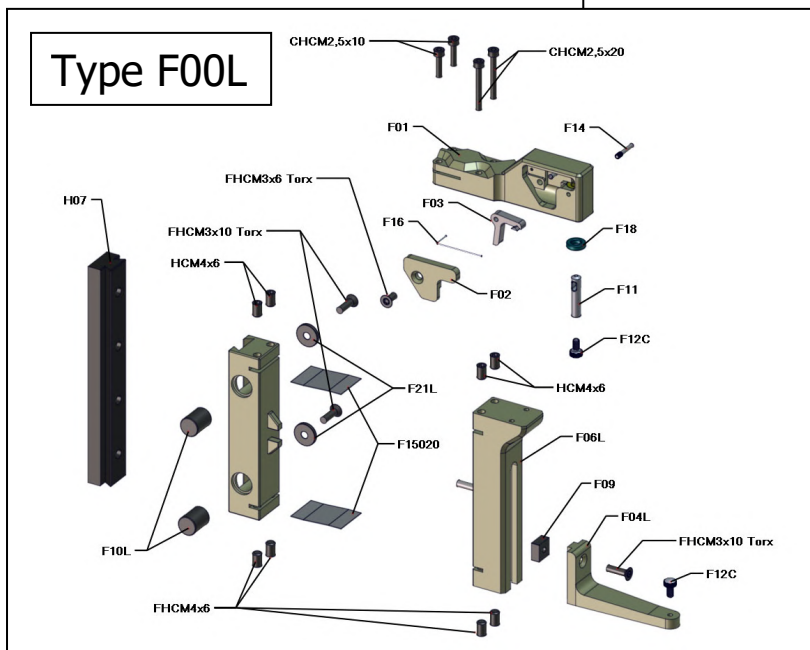
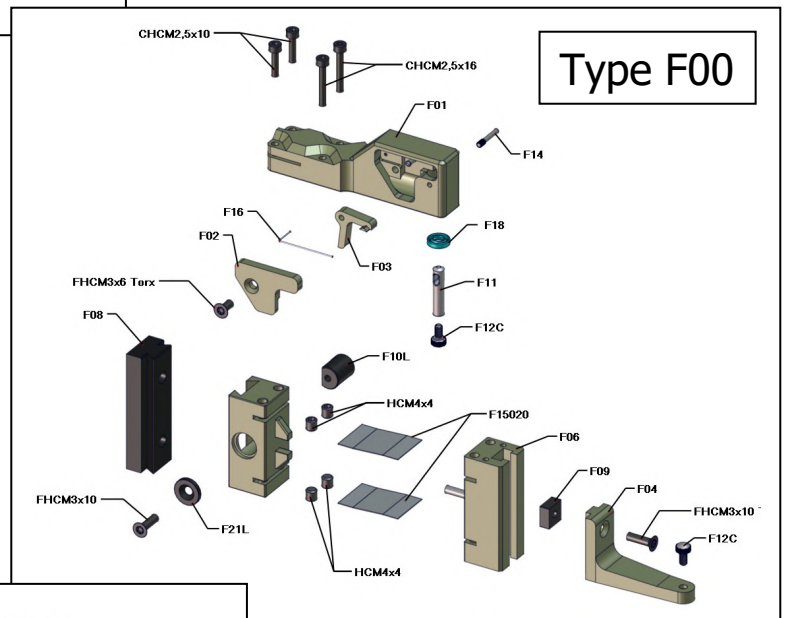
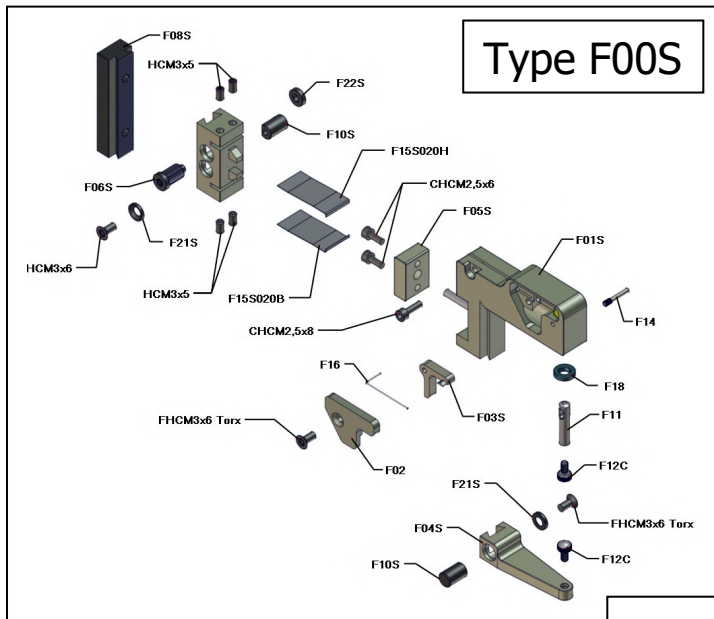
Description : *Recovery chute for ESCO controlled by ML2008 amplifier*

Diameter gauge

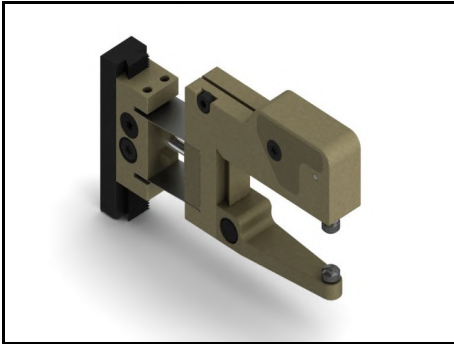
Type FOOS / Type FOO / Type FOOL



Diameter gauge



Diameter Gauge



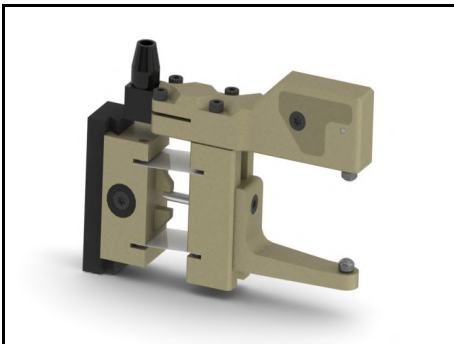
Reference **F00S**

Designation **Probe F00S**

Application Diameter measurement in process or at station

Sale unit : x1

Description : *This true diameter probe is used to measure external diameters up to 15mm. It is used in conjunction with the internal sensor and amplifier.*



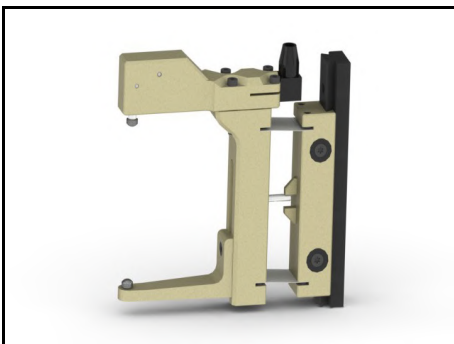
Reference **F00**

Designation **Probe F00**

Application Diameter measurement in process or at station

Sale unit : x1

Description : *This true diameter probe is used to measure external diameters up to 40mm. It is used in conjunction with the internal sensor and an amplifier.*



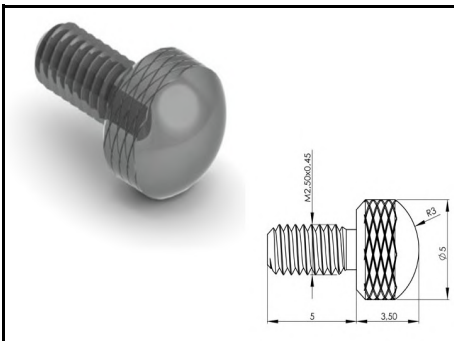
Reference **F00L**

Designation **Probe F00L**

Application Diameter measurement on process or at station

Sale unit : x1

Description : *This true diameter probe is used to measure external diameters up to 70mm. It is used in conjunction with the internal sensor and an amplifier.*



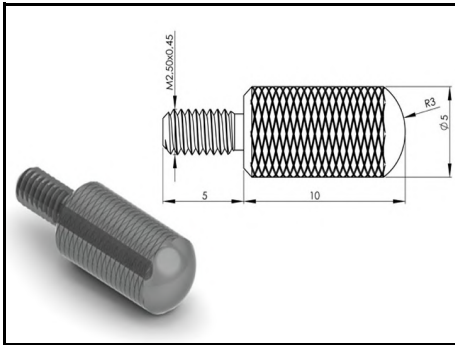
Reference **F12C**

Designation **Short contact tip**

Application F00S, F00, F00L and L00A

Sale unit : x1

Description : *This tip contacts the part to be measured.*



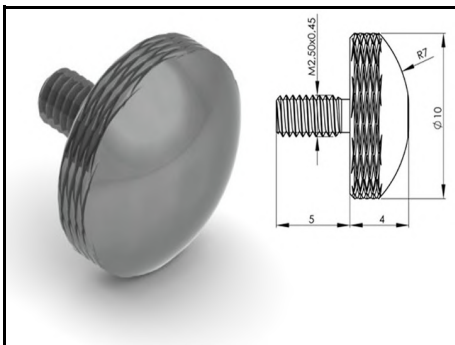
Reference **F12L**

Designation **Long contact tip**

Application F00S, F00, F00L and L00A

Sale unit : x1

Description : *This tip contacts the part to be measured.*



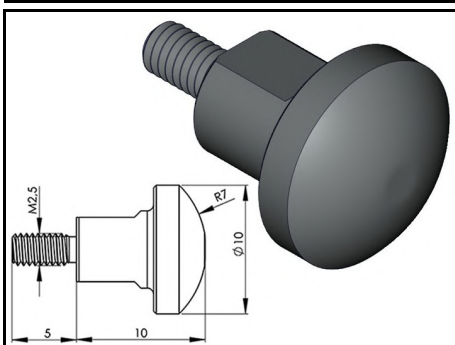
Reference **F12B**

Designation **Contact tip Ø10**

Application F00S, F00, F00L and L00A

Sale unit : x1

Description : *This tip contacts the part to be measured.*



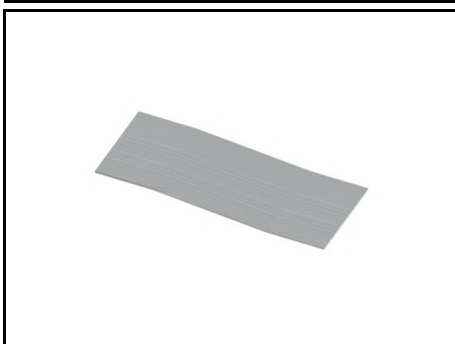
Reference **F12BL**

Designation **Long contact tip Ø10**

Application F00S, F00, F00L and L00A

Sale unit : x1

Description : *This tip contacts the part to be measured.*



Reference **F15020X2**

Designation **Spring blades 0,2mm**

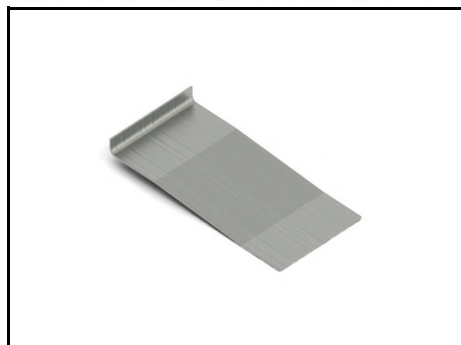
Application F00 and F00L

Sale unit : x2

Description : *These spring blades are located between the QA groove (F07 or F07L) and the T groove (F06 or F06L). The springs allow the C-caliper to self-center on the part to be measured.*

They are available in 2 strengths.

They are 0,20mm thick. Also available in 0,15mm (Ref.:F15015X2).



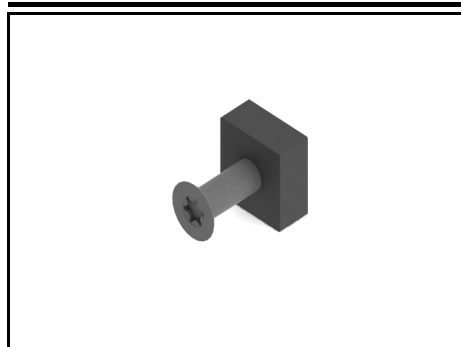
Reference **F15S020X2**

Designation **Spring blades 0,2mm**

Application F00S only

Sale unit : x2

Description : *These spring blades are located between the QA groove and the T groove. The springs allow the C-caliper to self-center on the part to be measured. They are available in 2 strengths. They are 0,20mm thick.*



Reference **F09X1**

Designation **Cap + screw**

Application F00 and F00L

Sale unit : x1

Description : *Delivered with 1 screw FHC M3x10*



Reference **F10LX1**

Designation **Clamp + washer + screw**

Application F00, F00L and H00

Sale unit : x1

Description : *Delivered with a screw FX M3x10.*



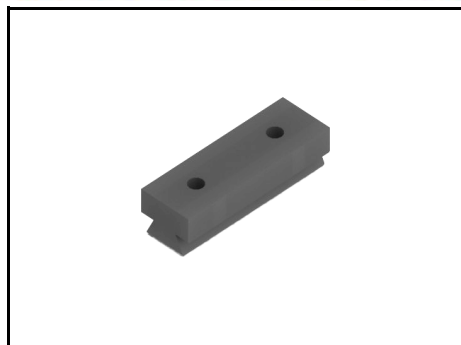
Reference **F10SX1**

Designation **Clamp + washer + screw**

Application F00S only

Sale unit : x1

Description : *Delivered with a screw FX M3x6*



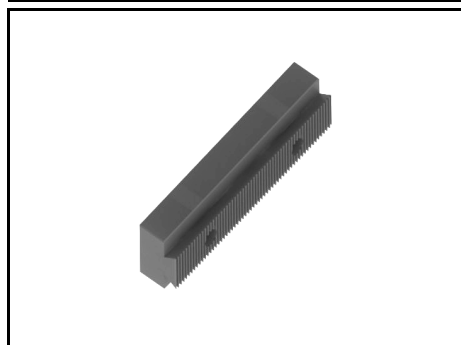
Reference **F08**

Designation **Short slide**

Application F00 only

Sale unit : x1

Description : *The QA groove F07X1 slides on the short slide in order to adjust the height of the unit. It is also used to fix the probe to the machine.*



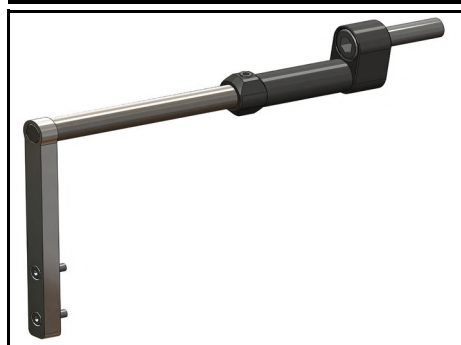
Reference **F08S**

Designation **Short slide**

Application F00S only

Sale unit : x1

Description : *The QA groove slides on the short slide in order to adjust the height of the unit. It is also used to fix the probe to the machine.*



Reference **F24S**

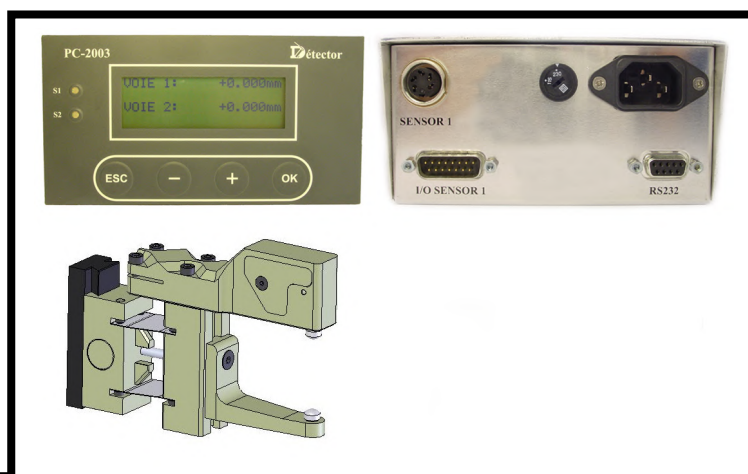
Designation **Mounting body**

Application F00S only

Sale unit : x1

Description : *Delivered with 1 screw CHC M10x35 and 1 screw M8x35*

Gauge in complete kit



Gauge in complete kit



Reference **PC2003B**

Designation **Dual channel amplifier**

Application Amplifier usable with all gauges

Sale unit : x1

Description : *This amplifier can be used with all Détector length or diameter gauges. This dual channel unit allows the use of 2 sensors independently or coupled. For more information concerning the installation, please refer to the user's guide for the PC2003 amplifier.*

Kit includes:

- 1 dual channel amplifier
- 1 power supply cable PC03D
- 2 input/output SUB-D15 cables PC04
- 1 set of 2 fixing squares PC11X2
- 1 PC2003 Electronic Amplifier User's Guide
- 1 Mechanical Installation and Sensor Adjustment Manual



Reference **PC2003B-DF**

Designation **Dual channel amplifier + 1 gauge F00**

Application Amplifier usable with all gauges

Sale unit : x1

Description : *This amplifier can be used with all Détector length or diameter gauges. This dual channel units allows the use of 2 sensors independently or coupled. For more information concerning the installation, please refer to the user's guide for the PC2003 amplifier.*

Kit includes:

- 1 dual channel amplifier
- 1 LvdT sensor PC02R
- 1 Probe F00 or F00L
- 1 power supply cable PC03D
- 2 input/output SUB-D15 cables PC04
- 1 set of 2 fixing squares PC11X2
- 1 additional probe tip F12L
- 1 PC2003 Electronic Amplifier User's Guide
- 1 Mechanical Installation and Sensor Adjustment Manual



Reference **PC2003B-DF/DF**

Designation **Dual channel amplifier + 2 gauges F00**

Application Amplifier usable with all gauges

Sale unit : x1

Description : *This amplifier can be used with all Détector length or diameter gauges. This dual channel unit allows the use of 2 sensors independently or coupled.
For more information concerning the installation, please refer to the user's guide for the PC2003 amplifier.*

Kit includes:

- 1 dual channel amplifier
- 2 Lvdts sensors PC02R
- 2 Probes F00 or F00L
- 1 power supply cable PC03D
- 2 input/output SUB-D15 cables PC04
- 1 set of 2 fixing squares PC11X2
- 2 additional probe tips F12L
- 1 PC2003 Electronic Amplifier User's Guide
- 1 Mechanical Installation and Sensor Adjustment Manual



Reference **PC2003B-H**

Designation **Dual channel amplifier + 1 gauge H00**

Application Amplifier usable with all gauges

Sale unit : x1

Description : *This amplifier can be used with all Détector length or diameter gauges. This dual channel unit allows the use of 2 sensors independently or coupled.
For more information concerning the installation, please refer to the user's guide for the PC2003 amplifier.*

Kit includes:

- 1 dual channel amplifier
- 1 Lvdts sensor PC02A or 1 Lvdts sensor PC02APR (Protected and reinforced)
- 1 Probe H00
- 1 power supply cable PC03D
- 2 input/output SUB-D15 cables PC04
- 1 set of 2 fixing squares PC11X2
- 1 additional probe tip H0420X1
- 1 PC2003 Electronic Amplifier User's Guide
- 1 Mechanical Installation and Sensor Adjustment Manual



Reference **PC2003B-H/DF**

Designation **Dual channel amplifier + 1 gauge H00 + 1 gauge F00**

Application Amplifier usable with all gauges

Sale unit : x1

Description : *This amplifier can be used with all Détector length or diameter gauges. This dual channel unit allows the use of 2 sensors independently or coupled. For more information concerning the installation, please refer to the user's guide for the PC2003 amplifier.*

Kit includes:

- 1 dual channel amplifier
- 1 Lvdv sensor PC02A or 1 Lvdv sensor PC02APR (Protected and reinforced)
- 1 Lvdv sensor PC02R
- 1 Probe H00 + 1 probe F00 or F00L
- 1 power supply cable PC03D
- 2 input/output SUB-D15 cables PC04
- 1 set of 2 fixing squares PC11X2
- 1 additional probe tip H0420X1
- 1 additional probe tip F12L
- 1 PC2003 Electronic Amplifier User's Guide
- 1 Mechanical Installation and Sensor Adjustment Manual



Reference **PC2003B-H/H**

Designation **Dual channel amplifier + 2 gauges H00**

Application Amplifier usable with all gauges

Sale unit : x1

Description : *This amplifier can be used with all Détector length or diameter gauges. This dual channel unit allows the use of 2 sensors independently or coupled. For more information concerning the installation, please refer you to the user's guide for the PC2003 amplifier.*

Kit includes:

- 1 dual channel amplifier
- 2 Lvdv sensors PC02A or 2 Lvdv sensors PC02APR (Protected and reinforced)
- 2 Probes H00
- 1 power supply cable PC03D
- 2 input/output SUB-D15 cables PC04
- 1 set of 2 fixing squares PC11X2
- 2 additional probe tips H0420X1
- 1 PC2003 Electronic Amplifier User's Guide
- 1 Mechanical Installation and Sensor Adjustment Manual

Reference **PC2003B-HD**Designation **Dual channel amplifier + 1 gauge H00D**

Application Amplifier usable with all gauges

Sale unit : x1

Description : *This amplifier can be used with all Détector length or diameter gauges. This dual channel unit allows the use of 2 sensors independently or coupled. For more information concerning the installation, please refer to the user's guide for the PC2003 amplifier.*

Kit includes:

- 1 dual channel amplifier
- 1 LvdT sensor PC02A or 1 LvdT sensor PC02APR (Protected and reinforced)
- 1 Probe H00D
- 1 power supply cable PC03D
- 2 input/output SUB-D15 cables PC04
- 1 set of 2 fixing squares PC11X2
- 1 additional probe tip H0420PLX1
- 1 PC2003 Electronic Amplifier User Guide
- 1 Mechanical Installation and Sensor Adjustment Manual

Reference **PC2003B-HD/DF**Designation **Dual channel amplifier + 1 gauge H00D + 1 gauge F00**

Application Amplifier usable with all gauges

Sale unit : x1

Description : *This amplifier can be used with all Détector length or diameter gauges. This dual channel unit allows the use of 2 sensors independently or coupled. For more information concerning the installation, please refer to the user's guide for the PC2003 amplifier.*

Kit includes:

- 1 dual channel amplifier
- 1 LvdT sensor PC02A or 1 LvdT sensor PC02APR (Protected and reinforced)
- 1 LvdT sensor PC02R
- 1 Probe H00D + 1 Probe F00 or F00L
- 1 power supply cable PC03D
- 2 input/output SUB-D15 cables PC04
- 1 set of 2 fixing squares PC11X2
- 1 additional probe tip H0420PLX1
- 1 additional probe tip F12L
- 1 PC2003 Electronic Amplifier User's Guide
- 1 Mechanical Installation and Sensor Adjustment Manual



Reference **PC2003B-HDM**

Designation **Dual channel amplifier + 1 gauge H00DM**

Application Amplifier usable with all gauges

Sale unit : x1

Description : *This amplifier can be used with all Détector length or diameter gauges. This dual channel unit allows the use of 2 sensors independently or coupled. For more information concerning the installation, please refer to the user's guide for the PC2003 amplifier.*

Kit includes:

- 1 dual channel amplifier
- 1 Lvdv sensor PC02AC
- 1 Probe H00DM
- 1 power supply cable PC03D
- 2 input/output SUB-D15 cables PC04
- 1 set of 2 fixing squares PC11X2
- 1 additional probe tip H0420PLX1
- 1 PC2003 Electronic Amplifier User Guide
- 1 Mechanical Installation and Sensor Adjustment Manual



Reference **PC2003B-HDM/DF**

Designation **Dual channel amplifier + 1 gauge H00DM + 1 gauge F00**

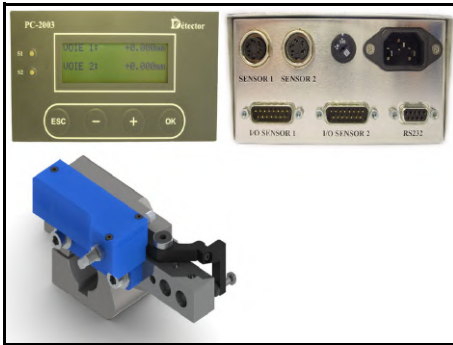
Application Amplifier usable with all gauges

Sale unit : x1

Description : *This amplifier can be used with all Détector length or diameter gauges. This dual channel unit allows the use of 2 sensors independently or coupled. For more information concerning the installation, please refer to the user's guide for the PC2003 amplifier.*

Kit includes:

- 1 dual channel amplifier
- 1 Lvdv sensor PC02AC
- 1 Lvdv sensor PC02R
- 1 Probe H00DM + 1 Probe F00 or F00L
- 1 power supply cable PC03D
- 2 input/output SUB-D15 cables PC04
- 1 set of 2 fixing squares PC11X2
- 1 additional probe tip H0420PLX1
- 1 additional probe tip F12L
- 1 PC2003 Electronic Amplifier User Guide
- 1 Mechanical Installation and Sensor Adjustment Manual



Reference **PC2003B-LA**

Designation **Dual channel amplifier + 1 gauge L00A**

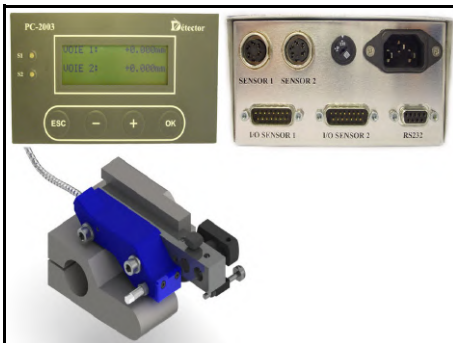
Application Amplifier usable with all gauges

Sale unit : x1

Description : *This amplifier can be used with all Détector length and diameter gauges. This dual channel unit allows the use of 2 sensors independently or coupled. For more information concerning the installation, please refer to the user's guide for the PC2003 amplifier.*

Kit includes:

- 1 dual channel amplifier PC2003B
- 1 LVDT sensor PC02A
- 1 probe L00A
- 1 power supply cable PC03D
- 2 input/output SUB/D15 cables PC04
- 1 set of 2 fixing squares PC11X2
- 1 set of additional probe tips + spring
- 1 PC2003 Electronic Amplifier User's Guide
- 1 Mechanical Installation and Sensor Adjustment Manual



Reference **PC2003B-LB**

Designation **Dual channel amplifier + 1 gauge L00B**

Application Amplifier usable with all gauges

Sale unit : x1

Description : *This amplifier can be used with all Détector length and diameter gauges. This dual channel unit allows the use of 2 sensors independently or coupled. For more information concerning the installation, please refer to the user's guide for the PC2003 amplifier.*

Kit includes:

- 1 dual channel amplifier PC2003B
- 1 LVDT sensor PC02AS
- 1 probe L00B
- 1 power supply cable PC03D
- 2 input/output SUB/D15 cables PC04
- 1 set of 2 fixing squares PC11X2
- 1 set of additional probe tips + spring
- 1 PC2003 Electronic Amplifier User's Guide
- 1 Mechanical Installation and Sensor Adjustment Manual



Reference **PC2003B-V**

Designation **Dual channel amplifier + 1 gauge V00**

Application Amplifier usable with all gauges

Sale unit : x1

Description : *This amplifier can be used with all Détector length or diameter gauges. This dual channel unit allows the use of 2 sensors independently or coupled. For more information concerning the installation, please refer to the user's guide for the PC2003 amplifier.*

Kit includes:

- 1 dual channel amplifier
- 1 LvdT sensor PC02A or 1 LvdT sensor PC02APR (Protected and reinforced)
- 1 Probe V00 or V00C12
- 1 power supply cable PC03D
- 2 input/output SUB-D15 cables PC04
- 1 set of 2 fixing squares PC11X2
- 1 additional probe tip V06X1
- 1 PC2003 Electronic Amplifier User Guide
- 1 Mechanical Installation and Sensor Adjustment Manual



Reference **PC2003B-V/DF**

Designation **Dual channel amplifier + 1 gauge V00 + 1 gauge F00**

Application Amplifier usable with all gauge

Sale unit : x1

Description : *This amplifier can be used with all Détector length or diameter gauges. This dual channel unit allows the use of 2 sensors independently or coupled. For more information concerning the installation, please refer to the user's guide for the PC2003 amplifier.*

Kit includes:

- 1 dual channel amplifier
- 1 LvdT sensor PC02A or 1 LvdT sensor PC02APR (Protected and reinforced)
- 1 LvdT sensor PC02R
- 1 Probe V00 or V00C12 + 1 Probe F00 or F00L
- 1 power supply cable PC03D
- 2 input/output SUB-D15 cables PC04
- 1 set of 2 fixing squares PC11X2
- 1 additional probe tip V06X1
- 1 additional probe tip F12L
- 1 PC2003 Electronic Amplifier User's Guide
- 1 Mechanical Installation and Sensor Adjustment Manual



Reference **PC2003B-V/V**

Designation **Dual channel amplifier + 2 gauges V00**

Application Amplifier usable with all gauges

Sale unit : x1

Description : *This amplifier can be used with all Détector length or diameter gauges. This dual channel unit allows the use of 2 sensors independently or coupled. For more information concerning the installation, please refer to the user's guide for the PC2003 amplifier.*

Kit includes:

- 1 dual channel amplifier
- 2 LvdT sensors PC02A or 2 LvdT sensors PC02APR (Protected and reinforced)
- 2 Probes V00 or V00C12
- 1 power supply cable PC03D
- 2 input/output SUB-D15 cables PC04
- 1 set of 2 fixing squares PC11X2
- 2 additional probe tips V06X1
- 1 PC2003 Electronic Amplifier User's Guide
- 1 Mechanical Installation and Sensor Adjustment Manual



Reference **ML2008-R**

Designation **Amplifier + wire feedout gauge**

Application Amplifier usable with the R00, R00M and R00

Sale unit : x1

Description : *This amplifier is used to measure up to 4 feedouts.*

It is compatible with escomatic machines. (ESCO D2, D4 and Newmac)

For more information concerning the installation, please refer to the "ML2008 Amplifier User's Guide".

Kit includes:

- 1 amplifier ML2008
- 1 gauge R00
- 1 power supply cable PC03D
- 1 input/output SUB/D15 cable PC04
- 1 set of 2 fixing squares PC11X2
- 1 set of running wheels (R20V et R21V)
- 1 ML2008 Amplifier User's Guide



Reference **ML2008-R/ACN**

Designation **Amplifier + wire feedout gauge + ACN**

Application Amplifier usable with the R00, R00M and R00

Sale unit : x1

Description : *This amplifier is used to measure up to 4 feedouts.
It is compatible with escomatic machines. (ESCO D2, D4 and Newmac)*

The ACN facilitates the adjustment of the timing of the measurement evaluation signal.

For more information concerning the installation, please refer to the "ML2008 Amplifier User's Guide".

Kit includes:

- 1 amplifier ML2008
- 1 encoder for camshaft ACN
- 1 gauge R00
- 1 power supply cable PC03D
- 1 input/output SUB/D15 cable PC04
- 1 set of 2 fixing squares PC11X2
- 1 set of running wheels (R20V et R21V)
- 1 ML2008 Amplifier User's Guide



Reference **ML2008-RM**

Designation **Amplifier + wire feedout gauge**

Application Amplifier usable with the R00, R00M and R00

Sale unit : x1

Description : *This amplifier is used to measure up to 4 feedouts.
It is compatible with escomatic machines. (ESCO D2, D4, Newmac and Eubama)*

For more information concerning the installation, please refer to the "ML2008 Amplifier User's Guide".

Kit includes:

- 1 amplifier ML2008
- 1 gauge R00M
- 1 power supply cable PC03D
- 1 input/output SUB/D15 cable PC04
- 1 set of 2 fixing squares PC11X2
- 1 wheels R20ML
- 1 ML2008 Amplifier User's Guide



Reference **ML2008-RP/ACN-B/STG**

Designation **Amplifier + wire feedout gauge + Stabilizer + ACN**

Application Amplifier usable with the R00, R00M and R00

Sale unit : x1

Description : *This amplifier is used to measure up to 4 feedouts.
It is compatible with escomatic machines. (ESCO D6)*

The ACN facilitates the adjustment of the timing of the measurement evaluation signal.

For more information concerning the installation, please refer to the "ML2008 Amplifier User's Guide".

Kit includes:

- 1 amplifier ML2008
- 1 gauge R00P
- 1 Stabilizer
- 1 encoder for camshaft ACN
- 1 power supply cable PC03D
- 1 input/output SUB/D15 cable PC04
- 1 set of 2 fixing squares PC11X2
- 1 ML2008 Amplifier User's Guide



Reference **ML2008-RP/STG**

Designation **Amplifier + wire feedout gauge + Stabilizer**

Application Amplifier usable with the R00, R00M and R00

Sale unit : x1

Description : *This amplifier is used to measure up to 4 feedouts.
It is compatible with escomatic machines. (ESCO D6)*

For more information concerning the installation, please refer to the "ML2008 Amplifier User's Guide".

Kit includes:

- 1 amplifier ML2008
- 1 gauge R00P
- 1 Stabilizer
- 1 power supply cable PC03D
- 1 input/output SUB/D15 cable PC04
- 1 set of 2 fixing squares PC11X2
- 1 ML2008 Amplifier User's Guide

Touchscreen and electronic conditioners / Network



Touch screen and electronic conditioners



Reference **ETC1X1**

Designation **Touchscreen 4.3" - Detector's universal display**

Application 404 and all gauges

Sale unit : x1

Description : 4.3 "touch screen connectable to broken tool conditioner (CDT-404-2X1) and measurers conditioner (CDT-PC2X1) serving as an interface for setting up the network.



Reference **CDT-404-2X1**

Designation **Electronic conditioner for 404 - Dual channel**

Application 404 only

Sale unit : x1

Description : Electronic conditioner for 404 detector - Dual channel to connect 2 detectors,



Reference **CDT-PC2X1**

Designation **Electronic conditioner for measurer - Dual channel**

Application usable with all gauges

Sale unit : x1

Description : Electronic conditioner for measurer - Dual channel to connect 2 measurers



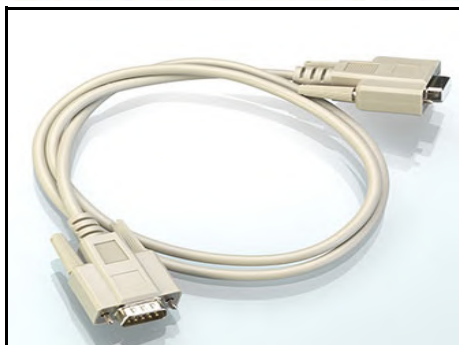
Reference **ETCPTF01X1**

Designation **Fixing bracket**

Application ETC1 only

Sale unit : x1

Description : Fixing bracket for ETC1 Touch screen



Reference **CORSER01**

Designation **SUB-D9 serial cable Male/Female 1 meter**

Application ETC1 only

Sale unit : x1

Description : *SUB-D9 serial cable male / female serial to connect the display to a conditioner or two conditioners together. Cable length : 1 meter*



Reference **CORSER03**

Designation **SUB-D9 serial cable Male/Female 3 meters**

Application ETC1 only

Sale unit : x1

Description : *SUB-D9 serial cable male / female serial to connect the display to a conditioner or two conditioners together. Cable length : 3 meters*



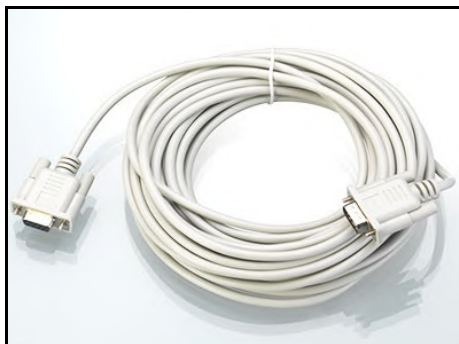
Reference **CORSER06**

Designation **SUB-D9 serial cable Male/Female 6 meters**

Application ETC1 only

Sale unit : x1

Description : *SUB-D9 serial cable male / female serial to connect the display to a conditioner or two conditioners together. Cable length : 6 meters*



Reference **CORSER10**

Designation **SUB-D9 serial cable Male/Female 10 meters**

Application ETC1 only

Sale unit : x1

Description : *SUB-D9 serial cable male / female serial to connect the display to a conditioner or two conditioners together. Cable length : 10 meters*



Reference **ADPSER90**

Designation **SUB-D9 Series 90 ° Adapter**

Application ETC1 only

Sale unit : x1

Description : *SUB-D9 Series 90 ° Adapter*



Reference **ETCSOR01**

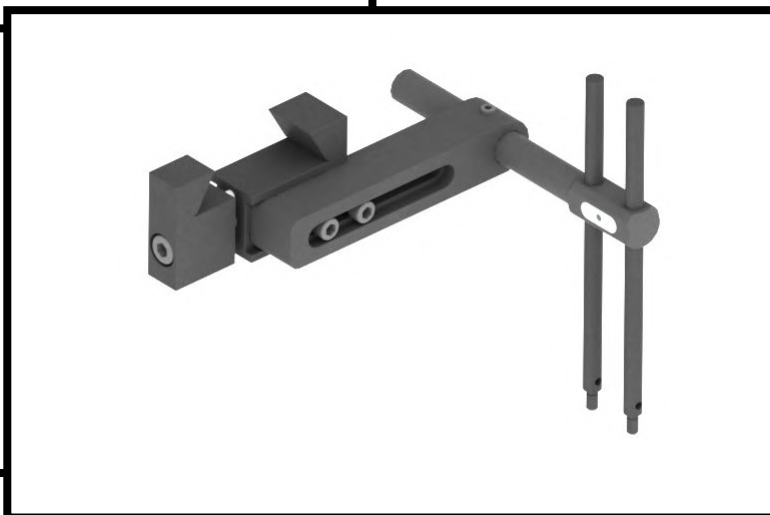
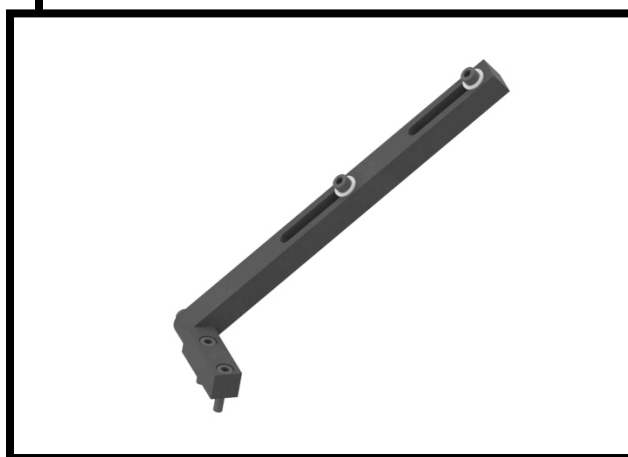
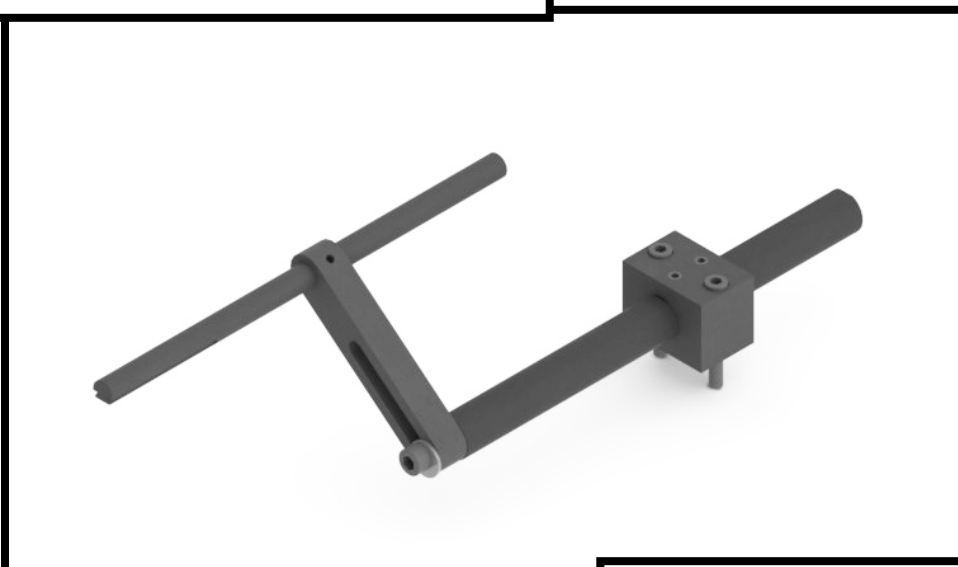
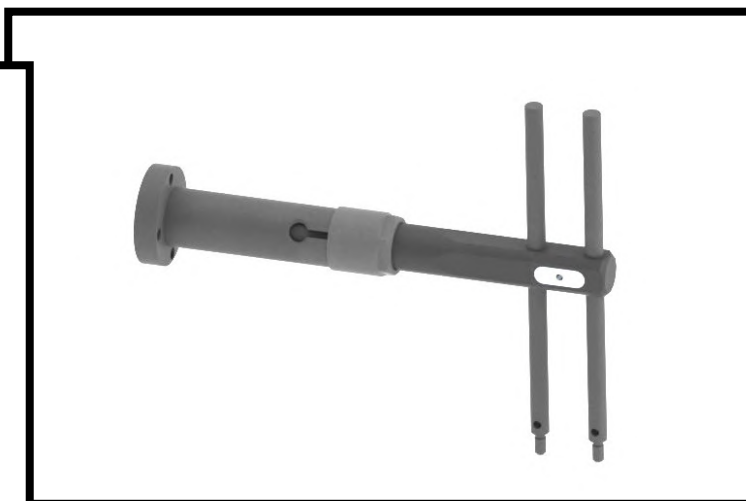
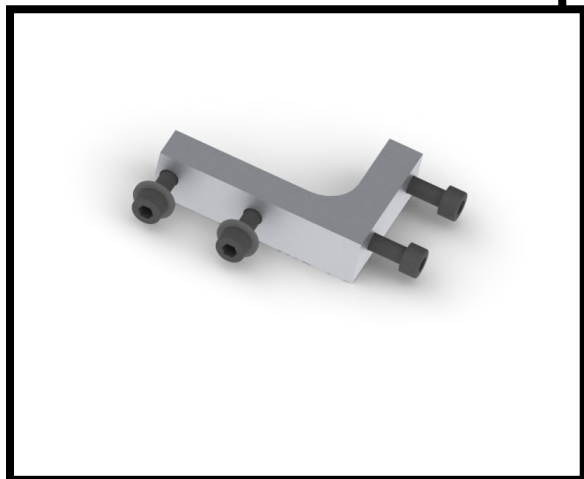
Designation **Reclining support**

Application ETC1 uniqueness

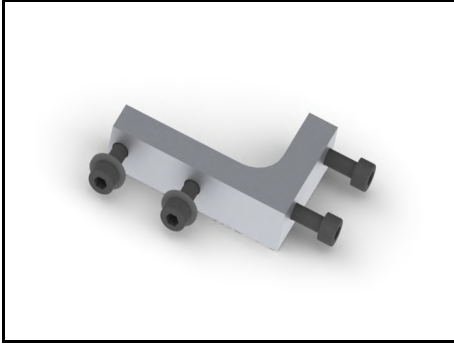
Sale unit : x1

Description : *Reclining support for ETC1 touchscreen*

Attachments elements for gauges



Attachment elements for gauges



Reference **F20X1**

Designation **Fixing square**

Application F00 and F00L

Sale unit : x1

Description : *This fixing square adapts the probe F00 or F00L to the standard mounting bracket H18C or H18L.*

Delivered with all the necessary screws and washers.



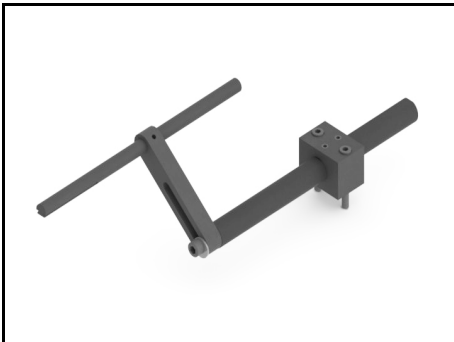
Reference **H18L**

Designation **Long standard mounting bracket**

Application H00, F00 and F00L

Sale unit : x1

Description : *This mounting bracket adapts to all the machines.
It is used to install the length sensor H00 or the diameter sensor F00/F00L.(+F20X1)
Delivered with all the necessary screws.*



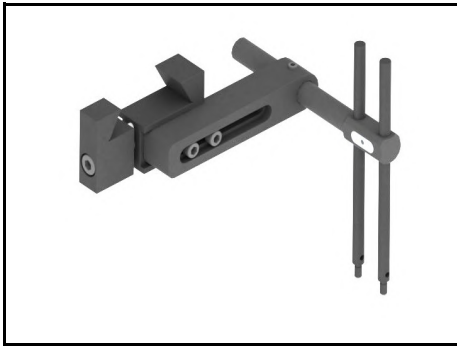
Reference **H17**

Designation **Mounting bracket for Gildemeister**

Application H00 only

Sale unit : x1

Description : *This mounting bracket adapts to Gildemeister machines.
It mounts on the back side of the frame.
It is used to install the length sensor H00.
Delivered with all the necessary screws.*



Reference **H22**

Designation **Mounting bracket QA for Wickman**

Application H00, F00 and F00L

Sale unit : x1

Description : *This mounting bracket adapts to all the machines.
It is used to install the length sensor H00 or the diameter sensor
F00/F00L.(+F20X1)
Delivered with all the necessary screws.*



Reference **H15**

Designation **Mounting bracket for 1" Wickman**

Application H00, F00 and F00L

Sale unit : x1

Description : *This mounting bracket adapts to the 1" Wickman machines.
It is used to install the length sensor H00 or the diameter sensor
F00/F00L.(+F20X1)
Delivered with all the necessary screws.*



Reference **H16**

Designation **Mounting bracket for 1"3/8 and 1"3/4
Wickman**

Application H00, F00 and F00L

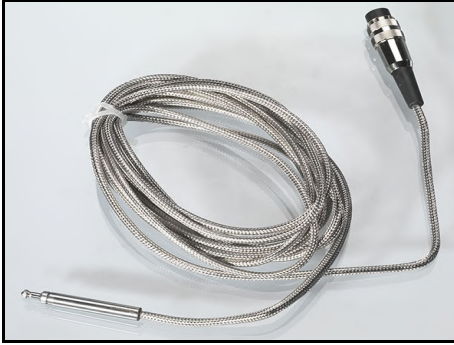
Sale unit : x1

Description : *This mounting bracket adapts to 1"3/8 and 1"3/4 Wickman machines.
It is used to install the length sensor H00 or the diameter sensor
F00/F00L.(+F20X1)
Delivered with all the necessary screws.*

Accessories for gauges



Accessories for gauges



Reference **PC02A**

Designation **Axial Lvd internal sensor / 4 meters**

Application For probes: H00 / H00D / V00 / V00C12

Sale unit : x1

Description : *This Lvd internal sensor is used only for the probes H00 / H00D / V00 and V00C12. It can be used with all Détector amplifiers.*

Cable length : 4 meters

Precaution: Do not use without a probe.



Reference **PC02A15**

Designation **Axial Lvd internal sensor / 1,5 meters**

Application For probes: H00 / H00D / V00 / V00C12

Sale unit : x1

Description : *This Lvd internal sensor is used only for the probes H00 / H00D / V00 and V00C12. It can be used with all Détector amplifiers.*

Cable length : 1.5 meters

Precaution: Do not use without a probe.



Reference **PC02APR**

Designation **Reinforced version of the axial Lvd internal sensor / 4 meters**

Application For probes: H00 / H00D / V00 / V00C12

Sale unit : x1

Description : *This Lvd internal sensor is used only for the probes H00 / H00D / V00 and V00C12. It can be used with all Détector amplifiers.*

Cable length: 4 meters (standard)

Particularity: Cable radius of curvature more important than the PC02A.

The cable is protected by flexible tubing and heat shrinkable sheath.

Precaution: Do not use the sensor without a probe.



Reference **PC02AC**

Designation **Axial Lvdv internal sensor / Short version / 4 meters**

Application H00DM only

Sale unit : x1

Description : *This Lvdv internal sensor is used only for the probe H00DM.
It can be used with all Détector amplifiers.
Cable length : 4 meters
Precaution: Do not use without a probe.*



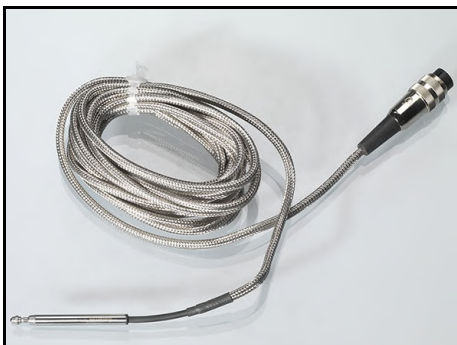
Reference **PC02ACPR**

Designation **Reinforced version of the Axial Lvdv internal sensor / Short version / 4 meters**

Application H00DM only

Sale unit : x1

Description : *This Lvdv internal sensor is used only for the probe H00DM.
It can be used with all Détector amplifiers.
Cable length : 4 meters
Particularity: Cable radius of curvature more important than the PC02AC.
The cable is protected by flexible tubing and heat shrinkable sheath.
Precaution: Do not use without a probe.*



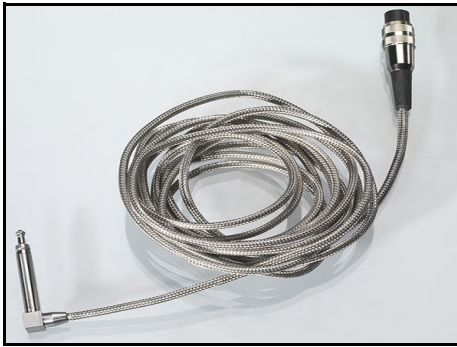
Reference **PC02AS**

Designation **Axial Lvdv sensor / Ø6 / 4 meters**

Application H00DS only

Sale unit : x1

Description : *This sensor is used only for the probe H00DS. It can be used with all Detector amplifiers.
Body diameter: 6mm
Cable length: 4 meters (standard)
Precaution: Do not use without a probe*



Reference **PC02R**

Designation **Radial Lvd internal sensor / 4 meters**

Application F00 and F00L

Sale unit : x1

Description : *This Lvd internal sensor is used only for the probes F00 and F00L.
It can be used with all Détector amplifiers.
Cable length : 4 meters
Precaution: Do not use without a probe.*



Reference **PC02RPR**

Designation **Reinforced version of the radial Lvd internal sensor / 4 meters**

Application F00 and F00L

Sale unit : x1

Description : *This Lvd internal sensor is used only for the probes F00 and F00L.
It can be used with all Détector amplifiers.
Cable length : 4 meters
Particularity: Cable radius of curvature more important than the PC02R.
The cable is protected by flexible tubing and heat shrinkable sheath.
Precaution: Do not use without a probe.*



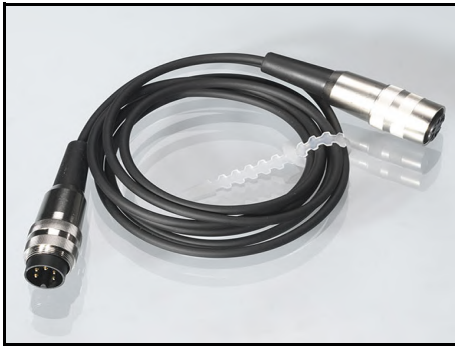
Reference **PC02ACPI**

Designation **Axial Lvd internal sensor / Short version / 4 meters**

Application F00S only

Sale unit : x1

Description : *This Lvd internal sensor is used only for the probe F00S.
It can be used with all Détector amplifiers.
Short version, reverse polarity
Cable length : 4 meters
Precaution: Do not use without a probe.*



Reference **PC08015**

Designation **Sensor extension cord / 1,5 meters**

Application For all internal sensors

Sale unit : x1

Description : *This extension cord with 1 SUB-D5 male pin connector and 1 SUB-D5 femal pin connector can be used with all the LvdT internal sensors.
Length: 1,5 meters*



Reference **PC0805**

Designation **Sensor extension cord / 5 meters**

Application For all internal sensors

Sale unit : x1

Description : *This extension cord with 1 SUB-D5 male pin connector and 1 SUB-D5 femal pin connector can be used with all lvdT internal sensors.
Length: 5 meters*



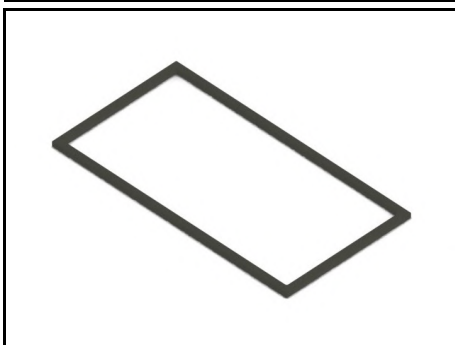
Reference **PC0810**

Designation **Sensor extension cord / 10 meters**

Application For all internal sensors

Sale unit : x1

Description : *This extension cord with 1 SUB-D5 male pin connector and 1 SUB-D5 femal pin connector can be used with all lvdT internal sensors.
Length: 10 meters*



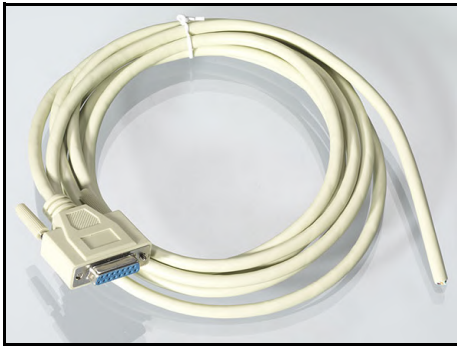
Reference **PC15**

Designation **Seal for amplifier**

Application PC2003 / ML2008 / ETC1

Sale unit : x1

Description : *This seal ensures the sealing around the amplifier fitted in the electric cabinet or in the protective enclosure (PC10).*

Reference **PC04**Designation **Input / output cable SUB-D15**

Application PC2003 / ML2008 / CDT-404-2X1 / CDT-PC2

Sale unit : x1

Description : *This cable allows the communication between the amplifier and the machine. The output / input pinlist wiring is explained in the "PC2003 amplifier user guide".*
 Length: 3 meters (standard)

Reference **PC0410**Designation **Input / output cable SUB-D15 - 10 meters**

Application PC2003 / ML2008 / CDT-404-2X1 / CDT-PC2

Sale unit : x1

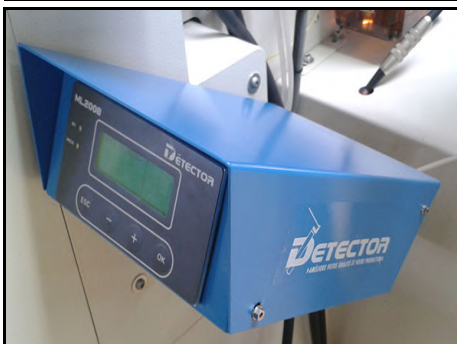
Description : *This cable allows the communication between the amplifier and the machine. The output / input pinlist wiring is explained in the "PC2003 amplifier user guide".*
 Length: 10 meters

Reference **PC04R020**Designation **SUB-D15 input/ output cable extension cord**

Application PC2003 / ML2008 / CDT-404-2X1 / CDT-PC2

Sale unit : x1

Description : *This extension cord with 1 SUB-D15 male pin connector and 1 SUB-D15 femal pin connector can be used with all Détector amplifiers. Length: 2 meters*

Reference **PC10X1**Designation **Protective enclosure**

Application PC2003 / ML2008 / ETC1

Sale unit : x1

Description : *This protective enclosure is used to protect the amplifier (PC2003 / ML2008 or PC300) from oil and water. It avoids cutting the electric cabinet in order to fit the amplifier.*

Product reference	Product family	Page
0102EEV110	Accessories for broken tool detectors	20
0102EEV24PKS	Accessories for broken tool detectors	21
0102EFXGM16X1	Accessories for broken tool detectors	20
0102KPC	Accessories for broken tool detectors	21
0102NSEMV2	Accessories for broken tool detectors	19
0102NSEVV2	Accessories for broken tool detectors	19
0102PST	Accessories for broken tool detectors	18
0102SAI	Accessories for broken tool detectors	20
0102TFL	Accessories for broken tool detectors	18
0102VFTCX1	Accessories for broken tool detectors	18
0102VFTLX1	Accessories for broken tool detectors	19
101	Broken Tool Detector Type 101	3
101NU	Broken Tool Detector Type 101	3
101STPX1	Broken Tool Detector Type 101	5
101TFF	Broken Tool Detector Type 101	5
101TPG	Broken Tool Detector Type 101	4
101TPGCHD	Broken Tool Detector Type 101	4
110	Broken tool detector Type 110	7
110JRL	Broken tool detector Type 110	9
110NU	Broken tool detector Type 110	7
110STPX1	Broken tool detector Type 110	8
110TPG120CHDX10	Broken tool detector Type 110	8
110TPG120X10	Broken tool detector Type 110	8
202	Broken Tool Detector Type 202	11
202JTQ	Broken Tool Detector Type 202	13
202NU	Broken Tool Detector Type 202	11
202PEP	Broken Tool Detector Type 202	13
202TCX	Broken Tool Detector Type 202	11
202TFF	Broken Tool Detector Type 202	12
202TPG	Broken Tool Detector Type 202	12
202TPGCHD	Broken Tool Detector Type 202	12
202UTC	Broken Tool Detector Type 202	12
202YDD	Broken Tool Detector Type 202	11
404	Broken Tool Detector Type 404	15
404BRFX1	Broken Tool Detector Type 404	16
404CBL	Broken Tool Detector Type 404	15
404CBL90	Broken Tool Detector Type 404	15
404RLG05	Broken Tool Detector Type 404	15
404STPX1	Broken Tool Detector Type 404	16
ADPSER90	Touch screen and electronic conditioners	61
CDT-404-2X1	Touch screen and electronic conditioners	59

Product reference	Product family	Page
CDT-PC2X1	Touch screen and electronic conditioners	59
CORSER01	Touch screen and electronic conditioners	60
CORSER03	Touch screen and electronic conditioners	60
CORSER06	Touch screen and electronic conditioners	60
CORSER10	Touch screen and electronic conditioners	60
D101	Broken Tool Detector Type 101	3
D101NU	Broken Tool Detector Type 101	4
D110	Broken tool detector Type 110	7
D110NU	Broken tool detector Type 110	8
ETC1X1	Touch screen and electronic conditioners	59
ETCPTF01X1	Touch screen and electronic conditioners	59
ETCSOR01	Touch screen and electronic conditioners	61
F00	Diameter Gauge	43
F00L	Diameter Gauge	43
F00S	Diameter Gauge	43
F08	Diameter Gauge	46
F08S	Diameter Gauge	46
F09X1	Diameter Gauge	45
F10LX1	Diameter Gauge	45
F10SX1	Diameter Gauge	45
F12B	Diameter Gauge	44
F12BL	Diameter Gauge	44
F12C	Diameter Gauge	43
F12L	Diameter Gauge	44
F15020X2	Diameter Gauge	44
F15S020X2	Diameter Gauge	45
F20X1	Attachment elements for gauges	63
F24S	Diameter Gauge	46
H00	Length Gauge	24
H00D	Length Gauge	24
H00DM	Length Gauge	24
H00DS	Length Gauge	24
H0410PLX1	Length Gauge	25
H0410X1	Length Gauge	25
H0420PLX1	Length Gauge	25
H0420X1	Length Gauge	25
H04ADAX1	Length Gauge	26
H04DS08PLX1	Length Gauge	26
H04DS08X1	Length Gauge	26
H05DS	Length Gauge	27
H07	Length Gauge	26

Product reference	Product family	Page
H07DM	Length Gauge	27
H07DS	Length Gauge	27
H08DS	Length Gauge	27
H15	Attachment elements for gauges	64
H16	Attachment elements for gauges	64
H17	Attachment elements for gauges	63
H18L	Attachment elements for gauges	63
H22	Attachment elements for gauges	64
L00A	Length Gauge	33
L00B	Length Gauge	33
L03A	Length Gauge	35
L03B	Length Gauge	35
L05B	Length Gauge	35
L06A	Length Gauge	35
L07BX1	Length Gauge	34
L08A	Length Gauge	36
L08B	Length Gauge	36
L09A	Length Gauge	36
L11B	Length Gauge	34
L12BX1	Length Gauge	34
L13A	Length Gauge	36
L14A-A	Length Gauge	34
L16A	Length Gauge	33
L17AX1	Length Gauge	33
ML2008-R	Gauge in complete kit	55
ML2008-R/ACN	Gauge in complete kit	56
ML2008-RM	Gauge in complete kit	56
ML2008-RP/ACN-B/STG	Gauge in complete kit	57
ML2008-RP/STG	Gauge in complete kit	57
PC02A	Accessories for gauges	66
PC02A15	Accessories for gauges	66
PC02AC	Accessories for gauges	67
PC02ACPI	Accessories for gauges	68
PC02ACPR	Accessories for gauges	67
PC02APR	Accessories for gauges	66
PC02AS	Accessories for gauges	67
PC02R	Accessories for gauges	68
PC02RPR	Accessories for gauges	68
PC04	Accessories for gauges	70
PC0410	Accessories for gauges	70
PC04R020	Accessories for gauges	70

Product reference	Product family	Page
PC08015	Accessories for gauges	69
PC0805	Accessories for gauges	69
PC0810	Accessories for gauges	69
PC10X1	Accessories for gauges	70
PC15	Accessories for gauges	69
PC2003B	Gauge in complete kit	48
PC2003B-DF	Gauge in complete kit	48
PC2003B-DF/DF	Gauge in complete kit	49
PC2003B-H	Gauge in complete kit	49
PC2003B-H/DF	Gauge in complete kit	50
PC2003B-H/H	Gauge in complete kit	50
PC2003B-HD	Gauge in complete kit	51
PC2003B-HD/DF	Gauge in complete kit	51
PC2003B-HDM	Gauge in complete kit	52
PC2003B-HDM/DF	Gauge in complete kit	52
PC2003B-LA	Gauge in complete kit	53
PC2003B-LB	Gauge in complete kit	53
PC2003B-V	Gauge in complete kit	54
PC2003B-V/DF	Gauge in complete kit	54
PC2003B-V/V	Gauge in complete kit	55
R00	Length Gauge	38
R00M	Length Gauge	38
R00P	Length Gauge	38
R20MV	Length Gauge	39
R24	Length Gauge	38
R25	Length Gauge	39
RCPD2	Length Gauge	40
STGD6	Length Gauge	39
STGGLC01X10	Length Gauge	39
V00	Length Gauge	29
V00C12	Length Gauge	29
V02X1	Length Gauge	31
V03	Length Gauge	30
V04X1	Length Gauge	30
V05X1	Length Gauge	31
V06-10X1	Length Gauge	29
V06R22X1	Length Gauge	30
V06X1	Length Gauge	29
V10C12	Length Gauge	31
V11X10	Length Gauge	30



manufacturer

DETECTOR France

36 route des lacs – PAE des Jourdiés

74800 Saint Pierre en Faucigny

Tél : +33 (0)450 037 998

Email : commercial@detector-france.com

www.detector-france.com

